

ALH SYSTEMS LTD

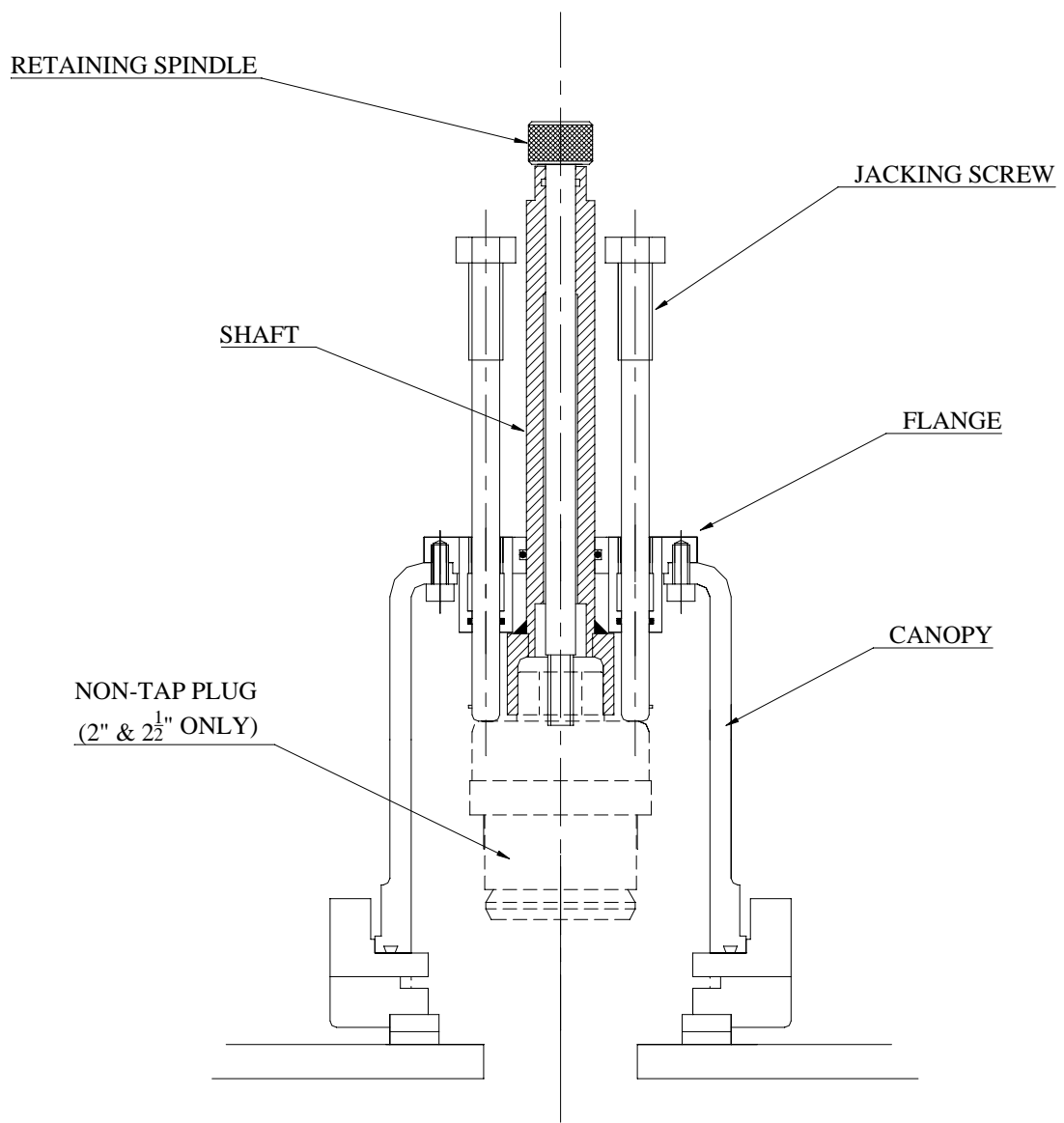
**2" & 2 1/2" NON-TAP PLUG
INSERTION TOOL**

**OPERATOR INSTRUCTIONS
& PARTS LIST**

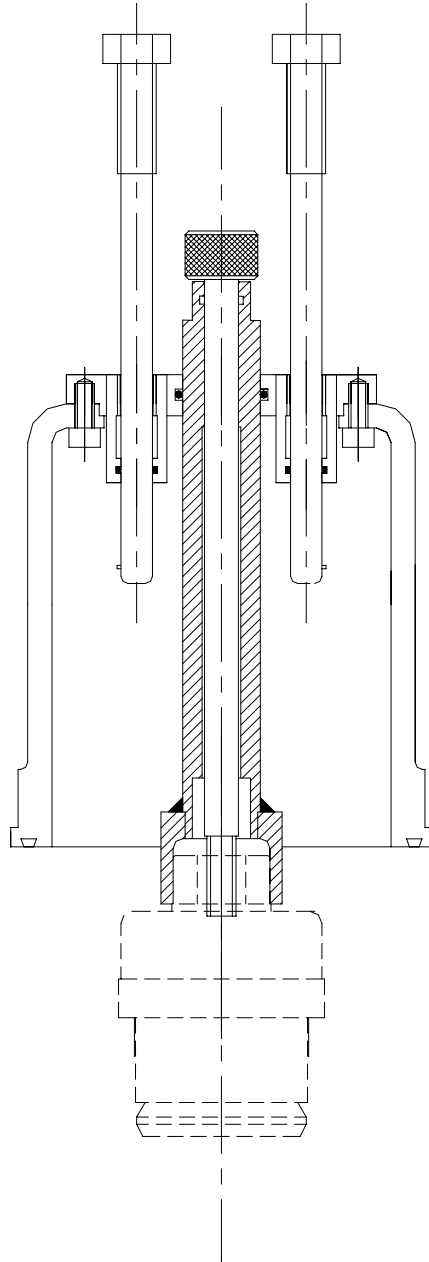
PHONE - 01373 858234

FAX - 01373 858235

email - sales@alh-systems.co.uk

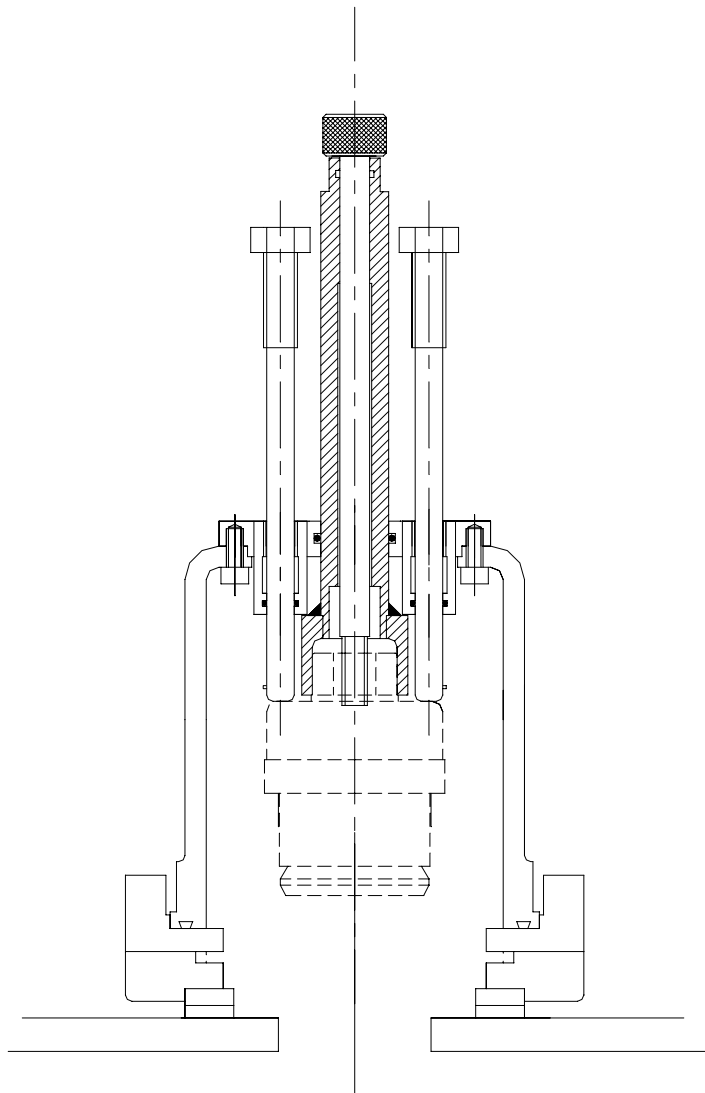


ASSEMBLY



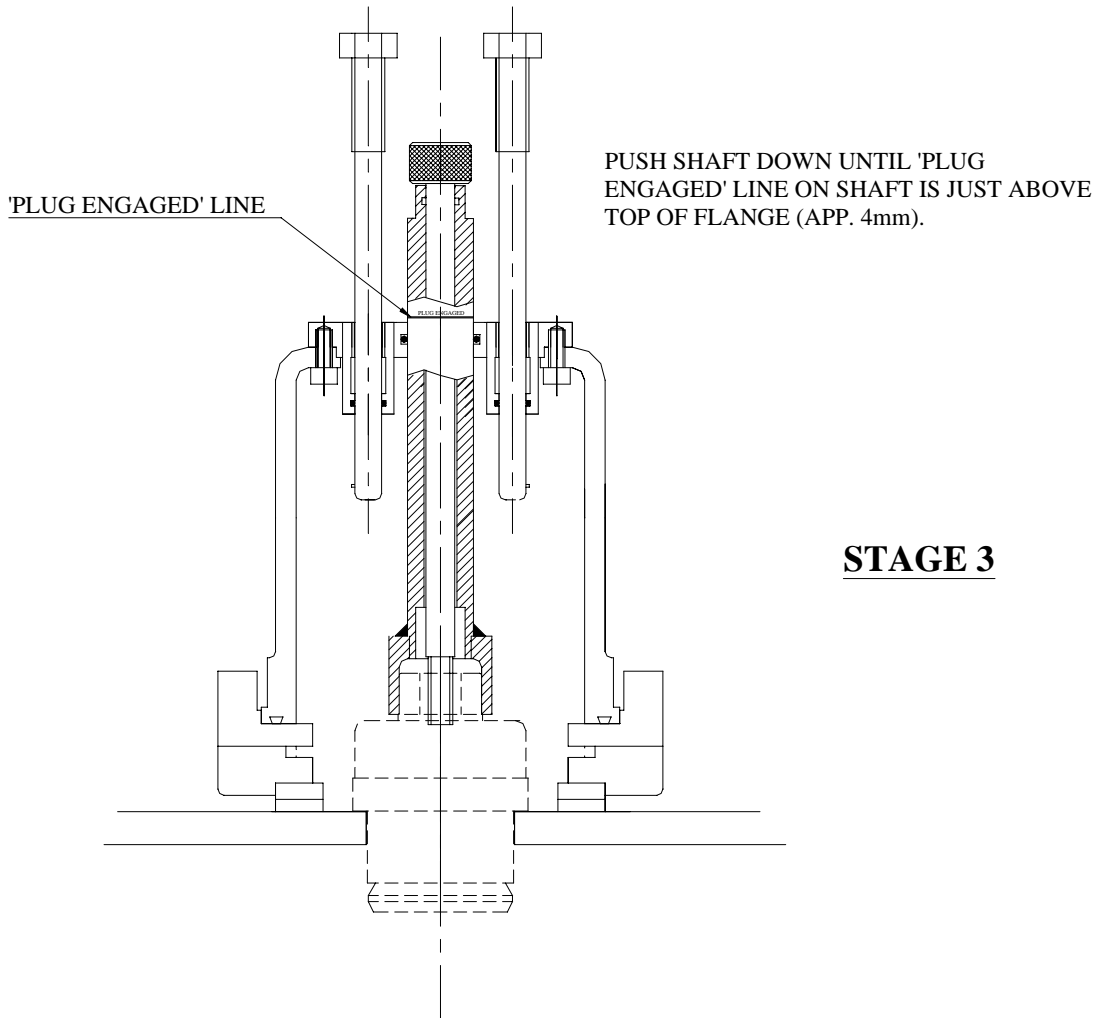
UNSCREW JACKING SCREWS FROM
FLANGE AND PULL UP INSIDE CANOPY.
PUSH SHAFT DOWN UNTIL END SOCKET
IS VISIBLE BELOW CANOPY.
OFFER UP NON-TAP PLUG TO SOCKET
AND TURN RETAINING SPINDLE TO PICK
UP ON THREAD IN TOP OF NON-TAP
PLUG STUD.
CONTINUE TURNING UNTIL NON-TAP
PLUG IS HELD IN SOCKET.

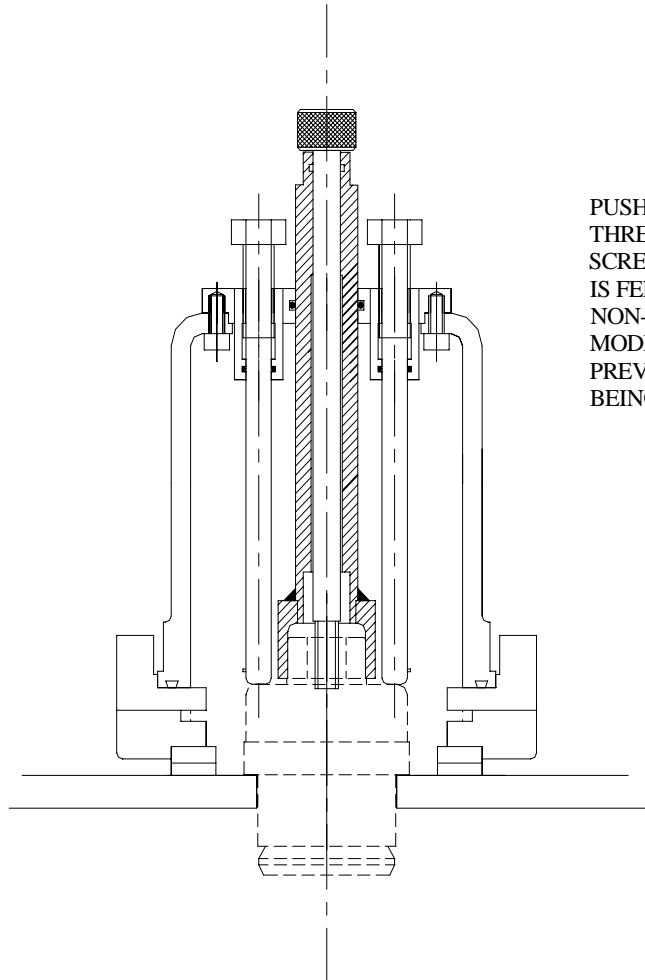
STAGE 1



PULL SHAFT UP UNTIL NON-TAP PLUG
IS HOUSED INSIDE CANOPY.
ATTACH WHOLE ASSEMBLY
TO ALH SERVICE VALVE.

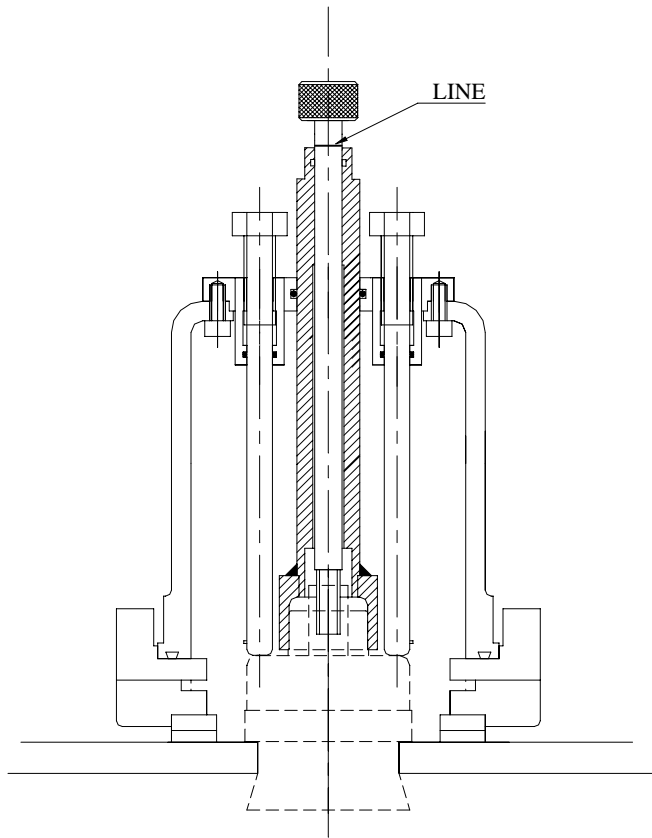
STAGE 2





PUSH JACKING SCREWS DOWN AND ENGAGE
THREADS IN FLANGE.
SCREW JACKING SCREWS DOWN UNTIL RESISTANCE
IS FELT THEN WIND DOWN EVENLY TO CLAMP
NON-TAP PLUG GASKET TO TOP OF PIPE.
MODERATE PRESSURE SHOULD BE SUFFICIENT TO
PREVENT NON-TAP PLUG FROM TURNING WHILST
BEING EXPANDED.

STAGE 4

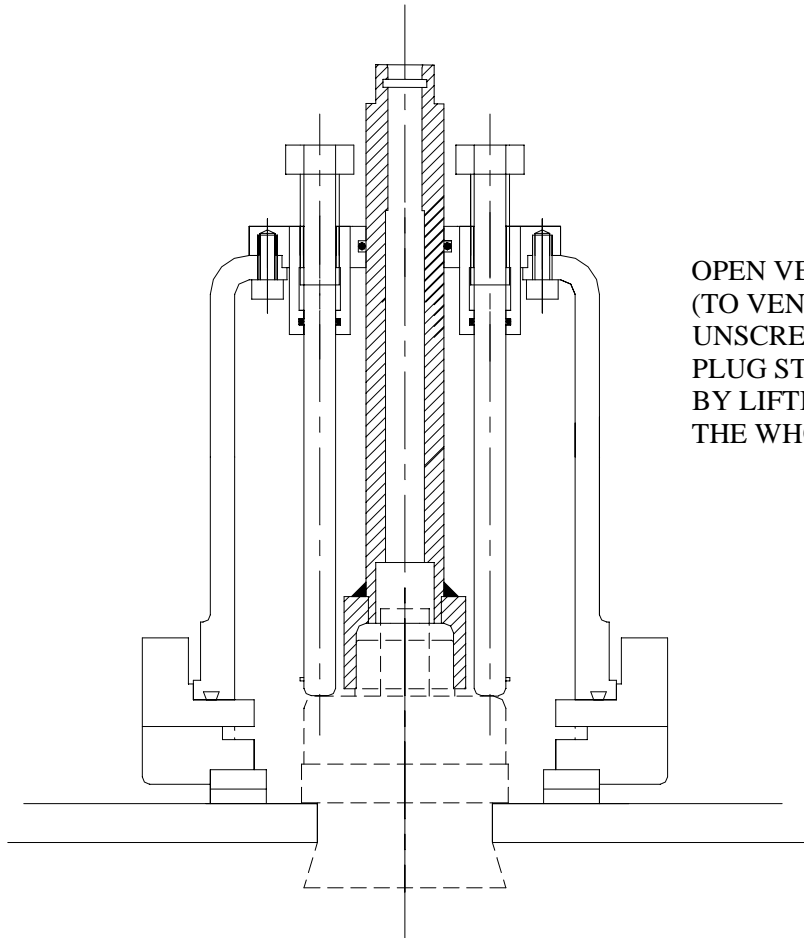


WIND SHAFT CLOCKWISE (USING THE DRILLING MACHINE RATCHET LEVER ON THE HEXAGON) TO 'PULL UP' NON TAP PLUG.

(DURING THIS OPERATION THE STUD IN THE NON-TAP PLUG IS PULLED UP CAUSING THE PLUG BODY TO EXPAND THE GASKET).

AS THE SHAFT IS ROTATED, THE HEAD OF THE RETAINING SPINDLE RISES UP RELATIVE TO THE TOP OF THE SHAFT. CONTINUE THIS OPERATION UNTIL A LINE ON THE RETAINING SPINDLE CAN BE SEEN. THIS INDICATES PLUG IS CORRECTLY EXPANDED (EXPANSION LENGTH = 13MM)

STAGE 5



OPEN VENT VALVE ON TOP OF CANOPY
(TO VENT PRESSURISED GAS).
UNSCREW RETAINING SPINDLE FROM
PLUG STUD AND REMOVE.
BY LIFTING THE SHAFT UPWARDS,
THE WHOLE ASSEMBLY CAN BE REMOVED.

STAGE 6