



# ALH SYSTEMS LTD

SMALL SERVICE TERMINATOR

OPERATING INSTRUCTIONS  
& PARTS LIST

PHONE 01373 858234

FAX 01373 858235

EMAIL [SALES@ALH-SYSTEMS.CO.UK](mailto:SALES@ALH-SYSTEMS.CO.UK)

WEBSITE [WWW.ALH-SYSTEMS.CO.UK](http://WWW.ALH-SYSTEMS.CO.UK)

ISSUE DATE - 05/08/2014

# **SMALL SERVICE TERMINATOR**

## **INTRODUCTION**

The ALH Service Terminator is designed to aid the safe termination of old service pipes. The Terminators are used to inject a non-setting sealant (mastic) into the pipe under no gas conditions to enable the service to be severed without loss of gas to atmosphere.

The small unit for use on  $\frac{3}{4}$ " -  $1\frac{1}{4}$ " services (see assembly drawings)

Terminators can be used to stop off pressures up to 50" wg (1.85 psi) but it is important to inject the requisite quantities of mastic (see mastic quantities).

## **PREPARATION**

1. Clean service using (wire brush) to allow good seating of seal.
2. If Terminator has been previously used, clean mastic residue to reduce drilling torque and mastic injection effort.



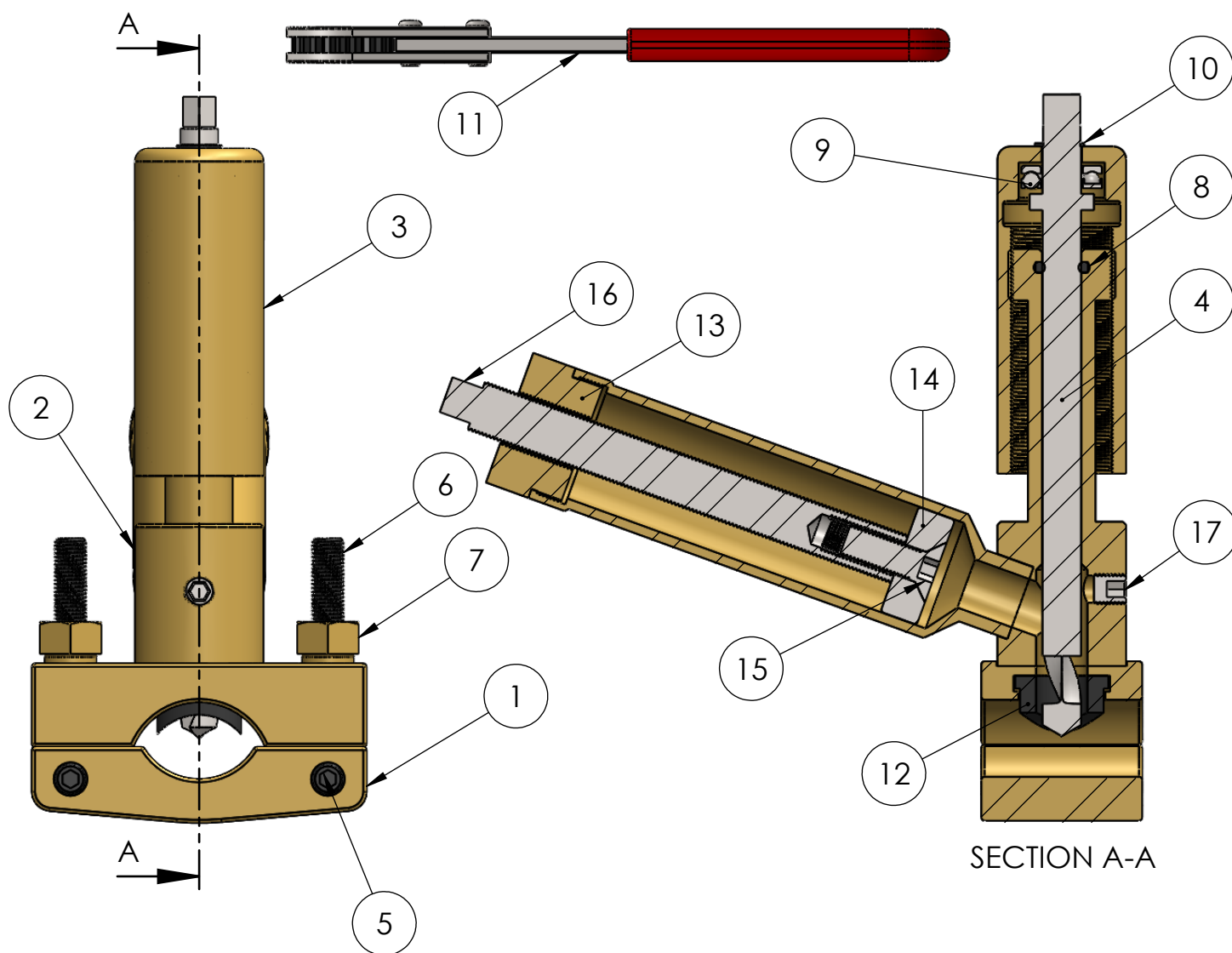
ALH SYSTEMS LIMITED  
1 KINGDOM AVENUE  
NORTHACRE INDUSTRIAL PARK  
WESTBURY, WILTS. BA13 4WE

TEL: +44 (0)1373 858234

E-MAIL: [sales@alh-systems.co.uk](mailto:sales@alh-systems.co.uk)

## SMALL SERVICE TERMINATOR

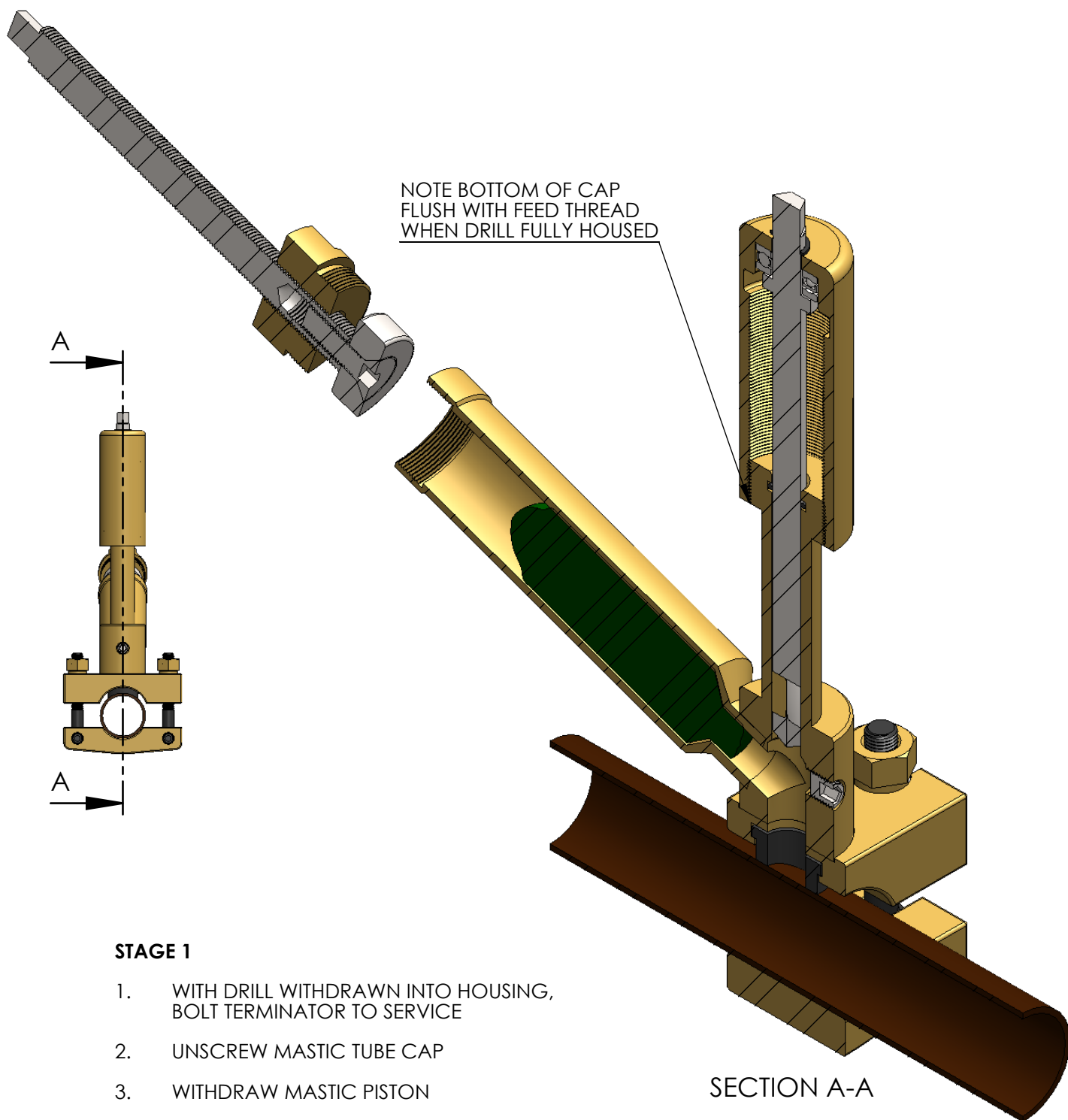
| ITEM NO. | PART NUMBER | DESCRIPTION     | QTY. |
|----------|-------------|-----------------|------|
| 1        | 168-0003    | CLAMP PLATE     | 1    |
| 2        | 168-9001    | BODY ASSEMBLY   | 1    |
| 3        | 168-0004    | FEED CAP        | 1    |
| 4        | 168-0009    | DRILL           | 1    |
| 5        | M9243       | GRUBSCREW       | 2    |
| 6        | M9242       | SWING BOLT      | 2    |
| 7        | 168-0007    | CLAMP NUT       | 2    |
| 8        | M1061       | O RING          | 1    |
| 9        | M9241       | THRUST RACE     | 1    |
| 10       | M4272       | CIRCLIP         | 1    |
| 11       | M9240       | RATCHET WRENCH  | 1    |
| 12       | 168-0010    | PIPE SEAL       | 1    |
| 13       | 168-0008    | MASTIC TUBE CAP | 1    |
| 14       | 168-0005    | PISTON DISC     | 1    |
| 15       | S0168       | CKS HD SCREW    | 1    |
| 16       | 168-0011    | PISTON BAR      | 1    |
| 17       | M9260       | GRUBSCREW       | 1    |



ALH SYSTEMS LIMITED  
1 KINGDOM AVENUE  
NORTHACRE INDUSTRIAL PARK  
WESTBURY, WILTS. BA13 4WE

TEL: +44 (0)1373 858234

E-MAIL: [sales@alh-systems.co.uk](mailto:sales@alh-systems.co.uk)



#### STAGE 1

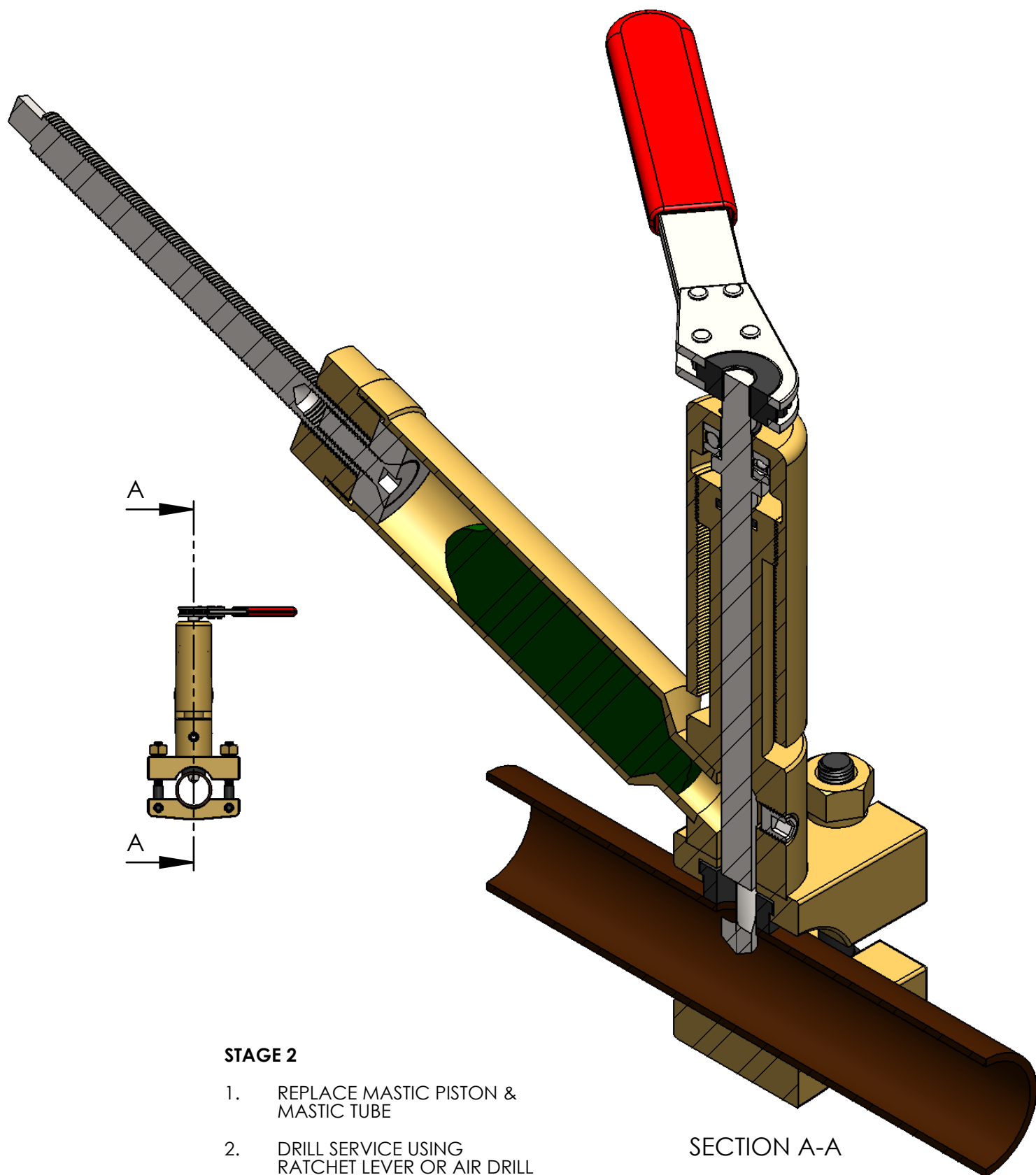
1. WITH DRILL WITHDRAWN INTO HOUSING,  
BOLT TERMINATOR TO SERVICE
2. UNSCREW MASTIC TUBE CAP
3. WITHDRAW MASTIC PISTON
4. FILL MASTIC TUBE WITH REQUIRED  
WEIGHT/VOLUME OF MASTIC  
(SEE APPENDIX A)



ALH SYSTEMS LIMITED  
1 KINGDOM AVENUE  
NORTHACRE INDUSTRIAL PARK  
WESTBURY, WILTS. BA13 4WE

TEL: +44 (0)1373 858234

E-MAIL: [sales@alh-systems.co.uk](mailto:sales@alh-systems.co.uk)



#### STAGE 2

1. REPLACE MASTIC PISTON & MASTIC TUBE
2. DRILL SERVICE USING RATCHET LEVER OR AIR DRILL PROVIDED & BY ROTATING DRILL FEED CAP SLOWLY

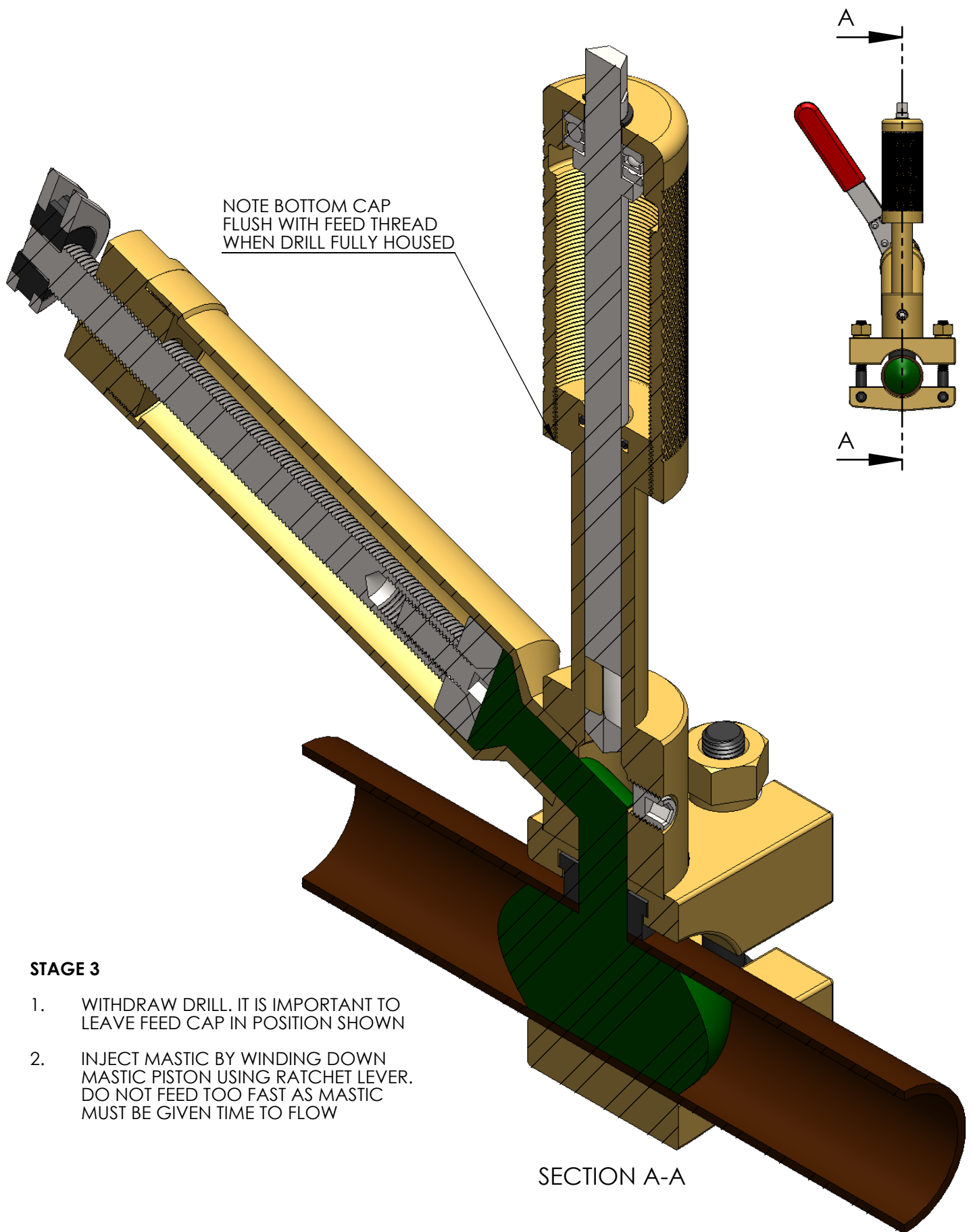
SECTION A-A



ALH SYSTEMS LIMITED  
1 KINGDOM AVENUE  
NORTHACRE INDUSTRIAL PARK  
WESTBURY, WILTS. BA13 4WE

TEL: +44 (0)1373 858234

E-MAIL: [sales@alh-systems.co.uk](mailto:sales@alh-systems.co.uk)



ALH SYSTEMS LIMITED  
1 KINGDOM AVENUE  
NORTHACRE INDUSTRIAL PARK  
WESTBURY, WILTS. BA13 4WE

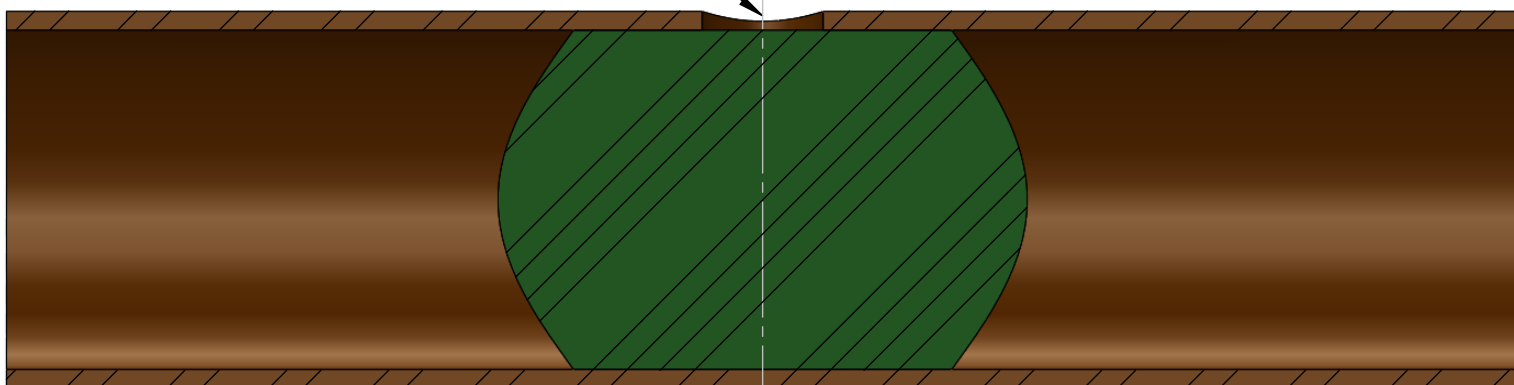
TEL: +44 (0)1373 858234

E-MAIL: [sales@alh-systems.co.uk](mailto:sales@alh-systems.co.uk)

CUT

**STAGE 4**

1. REMOVE TERMINATOR ASSEMBLY
2. CUT SERVICE. CUT THROUGH CENTRE OF INJECTION HOLE



ALH SYSTEMS LIMITED  
1 KINGDOM AVENUE  
NORTHACRE INDUSTRIAL PARK  
WESTBURY, WILTS. BA13 4WE

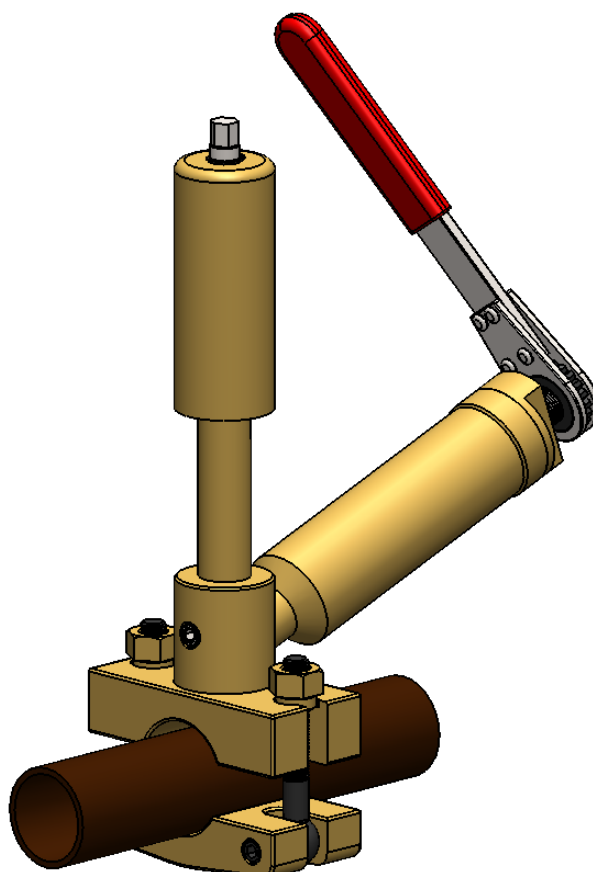
TEL: +44 (0)1373 858234

E-MAIL: [sales@alh-systems.co.uk](mailto:sales@alh-systems.co.uk)

**APPENDIX A**  
**MASTIC QUANTITIES**

| SERVICES @ 50" wg (1.85 psi) |       |        |      |      |         |
|------------------------------|-------|--------|------|------|---------|
| PIPE SIZE                    | GRAMS | OUNCES | LBS  | KGS  | STICK * |
| 3/4"                         | 50    | 1.76   | 0.11 | 0.05 | 1/20th  |
| 1"                           | 85    | 2.99   | 0.19 | 0.09 | 1/12th  |
| 1 1/4"                       | 150   | 5.28   | 0.33 | 0.15 | 1/6th   |

\* MASTIC IS SUPPLIED IN STICKS APPROX. 1½ SQUARE X 12" LG



ALH SYSTEMS LIMITED  
1 KINGDOM AVENUE  
NORTHACRE INDUSTRIAL PARK  
WESTBURY, WILTS. BA13 4WE

TEL: +44 (0)1373 858234

E-MAIL: [sales@alh-systems.co.uk](mailto:sales@alh-systems.co.uk)