



ALH SYSTEMS LTD

LARGE SERVICE TERMINATOR

OPERATING INSTRUCTIONS
& PARTS LIST

PHONE 01373 858234

FAX 01373 858235

EMAIL SALES@ALH-SYSTEMS.CO.UK

WEBSITE WWW.ALH-SYSTEMS.CO.UK

ISSUE DATE - 05/08/2014

LARGE SERVICE TERMINATOR

INTRODUCTION

The ALH Service Terminator is designed to aid the safe termination of old service pipes. The Terminators are used to inject a non-setting sealant (mastic) into the pipe under no gas conditions to enable the service to be severed without loss of gas to atmosphere.

The large unit for use on 1½ " & 2" services (see assembly drawings).

Terminators can be used to stop off pressures up to 50" wg (1.85psi) but it is important to inject the requisite quantities of mastic (see mastic quantities).

PREPARATION

1. Clean service using (wire brush) to allow good seating of seal.
2. If Terminator has been previously used, clean mastic residue to reduce drilling torque and mastic injection effort.



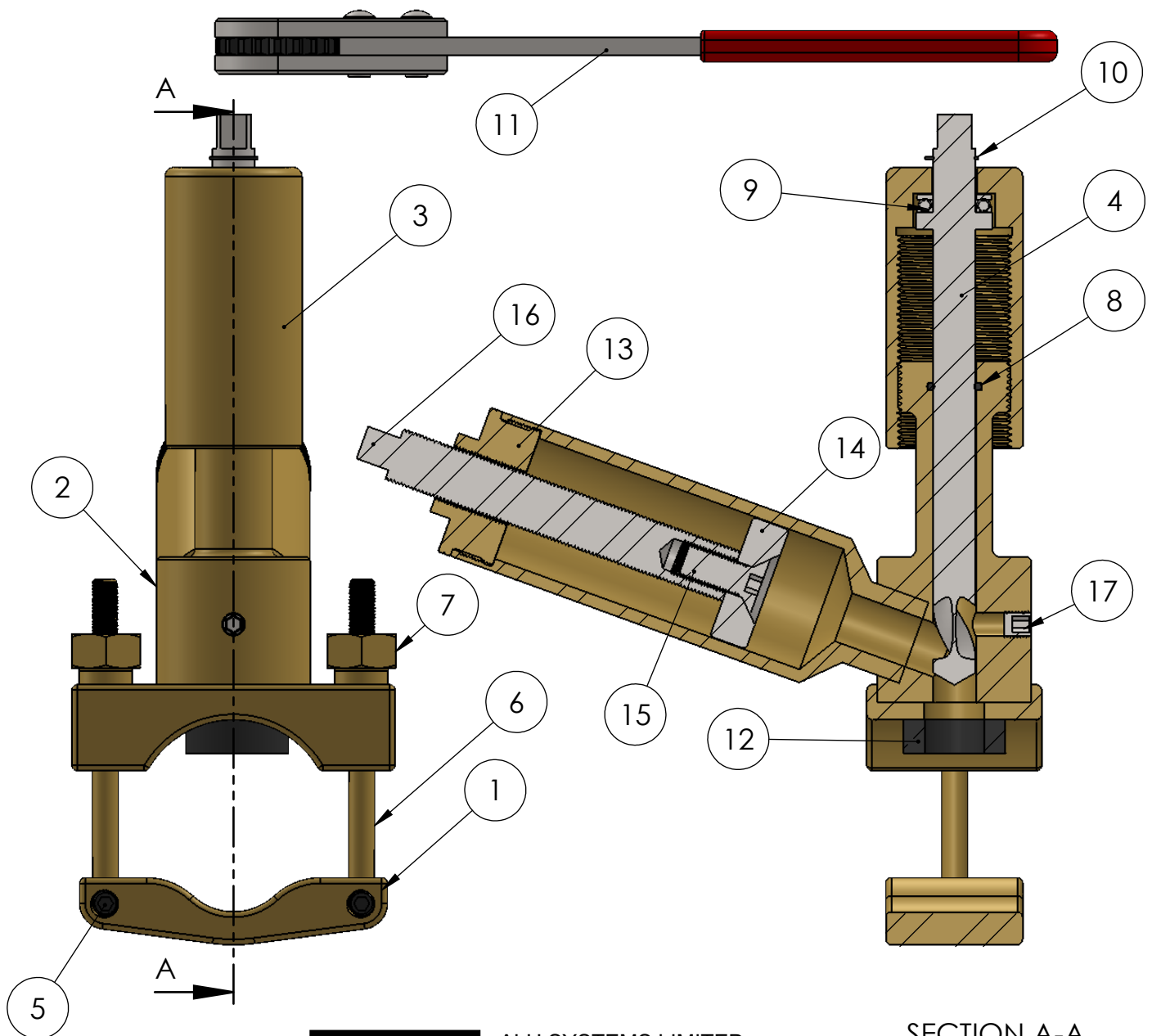
ALH SYSTEMS LIMITED
1 KINGDOM AVENUE
NORTHACRE INDUSTRIAL PARK
WESTBURY, WILTS. BA13 4WE

TEL: +44 (0)1373 858234

E-MAIL: sales@alh-systems.co.uk

LARGE SERVICE TERMINATOR

ITEM NO.	PART NUMBER	DESCRIPTION	QTY.
1	035-0002	CLAMP PLATE	1
2	035-9001	BODY ASSEMBLY	1
3	035-0003	FEED CAP	1
4	035-0007	DRILL	1
5	S0490	GRUBSCREW	2
6	035-0004	SWING BOLT	2
7	035-0006	CLAMP NUT	2
8	M1042	'O' RING	1
9	M4149	THRUST RACE	1
10	M2160	CIRCLIP	1
11	M4148	RATCHET WRENCH	1
12	035-0009	PIPE SEAL	1
13	035-0008	MASTIC TUBE CAP	1
14	035-0005	PISTON DISC	1
15	S0169	CKS HD SCREW	1
16	035-0011	PISTON BAR	1
17	M9260	GRUBSCREW	1



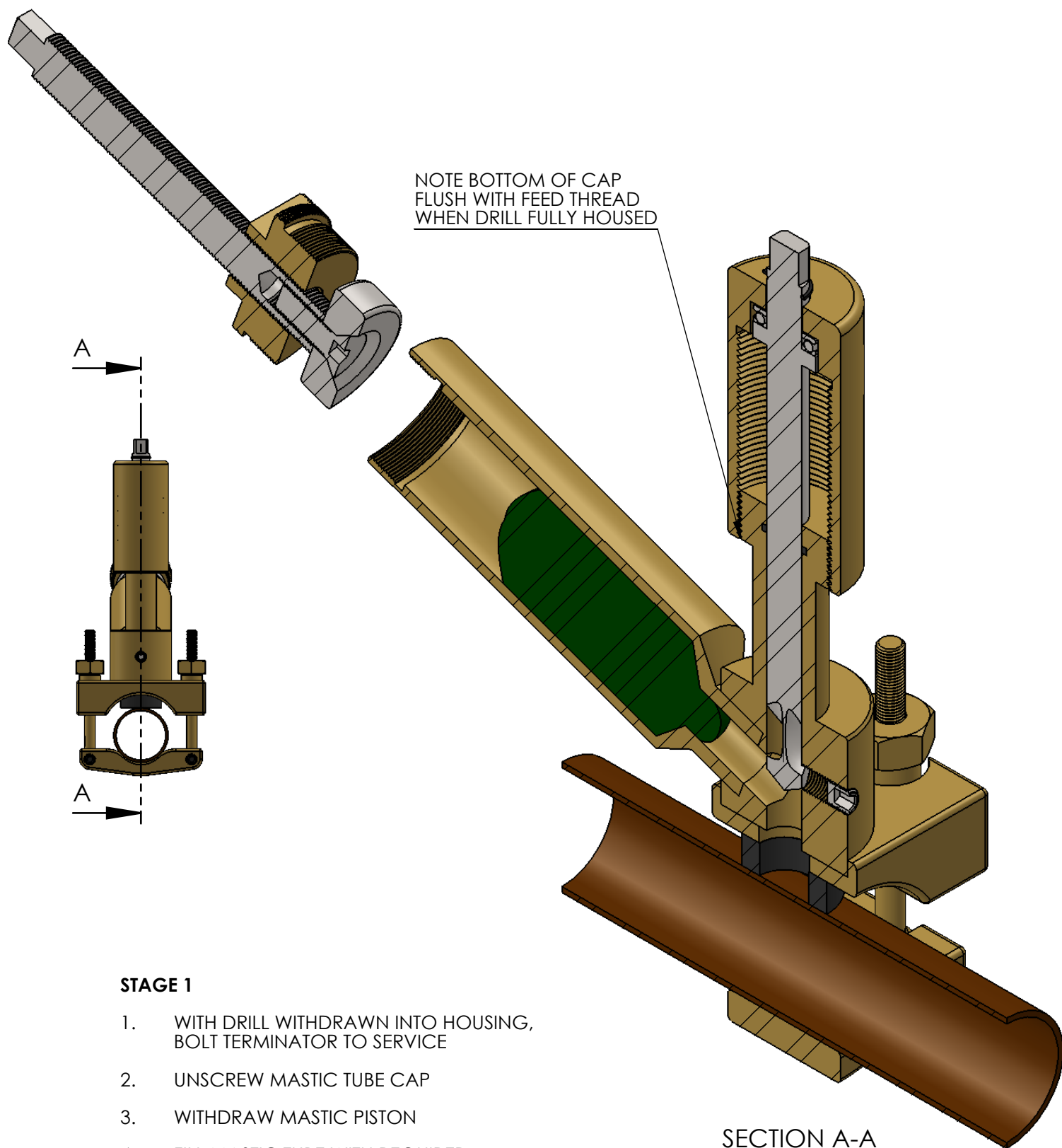
SECTION A-A



ALH SYSTEMS LIMITED
1 KINGDOM AVENUE
NORTHACRE INDUSTRIAL PARK
WESTBURY, WILTS. BA13 4WE

TEL: +44 (0)1373 858234

E-MAIL: sales@alh-systems.co.uk



STAGE 1

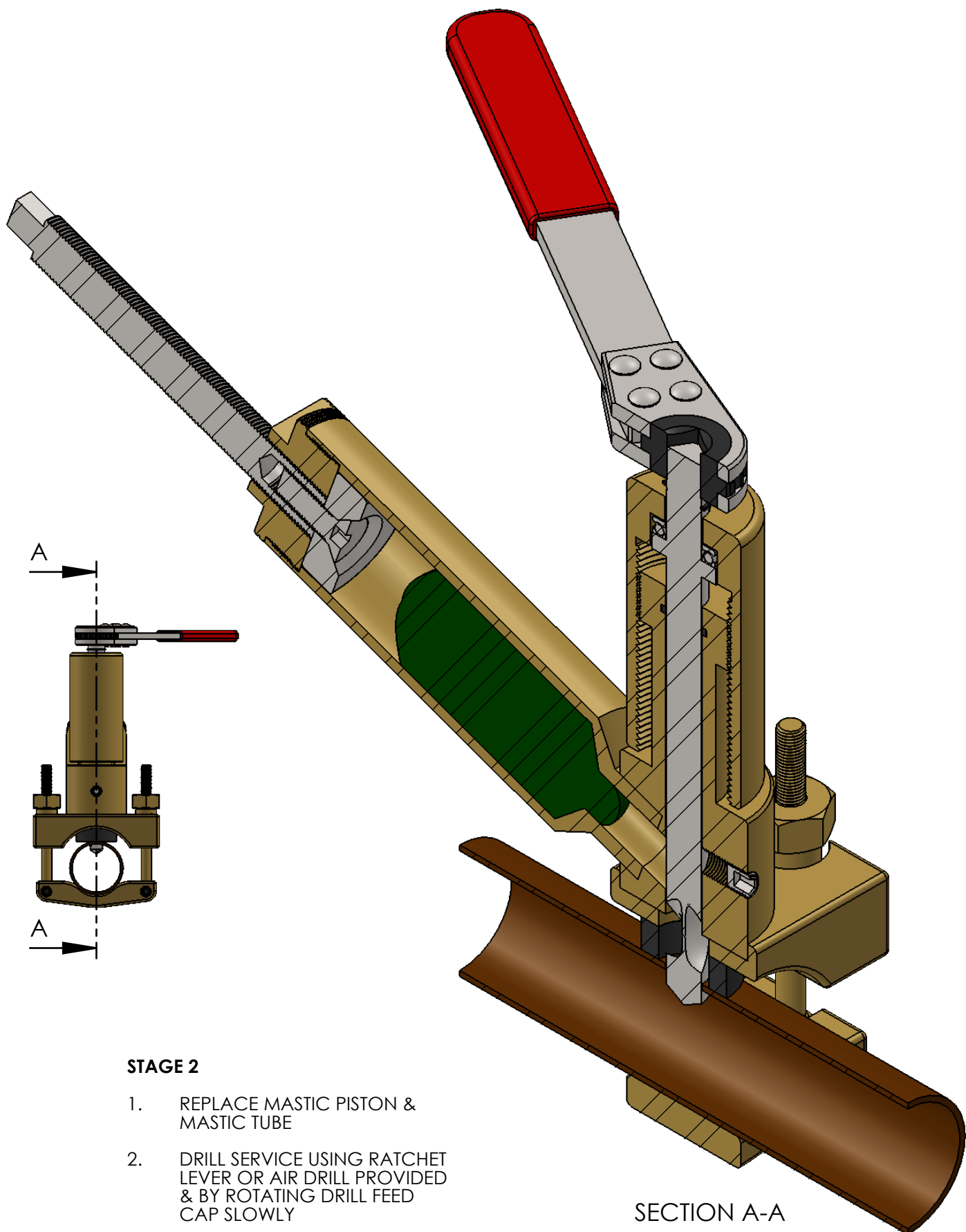
1. WITH DRILL WITHDRAWN INTO HOUSING, BOLT TERMINATOR TO SERVICE
2. UNSCREW MASTIC TUBE CAP
3. WITHDRAW MASTIC PISTON
4. FILL MASTIC TUBE WITH REQUIRED WEIGHT/VOLUME OF MASTIC (SEE APPENDIX A)



ALH SYSTEMS LIMITED
1 KINGDOM AVENUE
NORTHACRE INDUSTRIAL PARK
WESTBURY, WILTS. BA13 4WE

TEL: +44 (0)1373 858234

E-MAIL: sales@alh-systems.co.uk



STAGE 2

1. REPLACE MASTIC PISTON & MASTIC TUBE
2. DRILL SERVICE USING RATCHET LEVER OR AIR DRILL PROVIDED & BY ROTATING DRILL FEED CAP SLOWLY

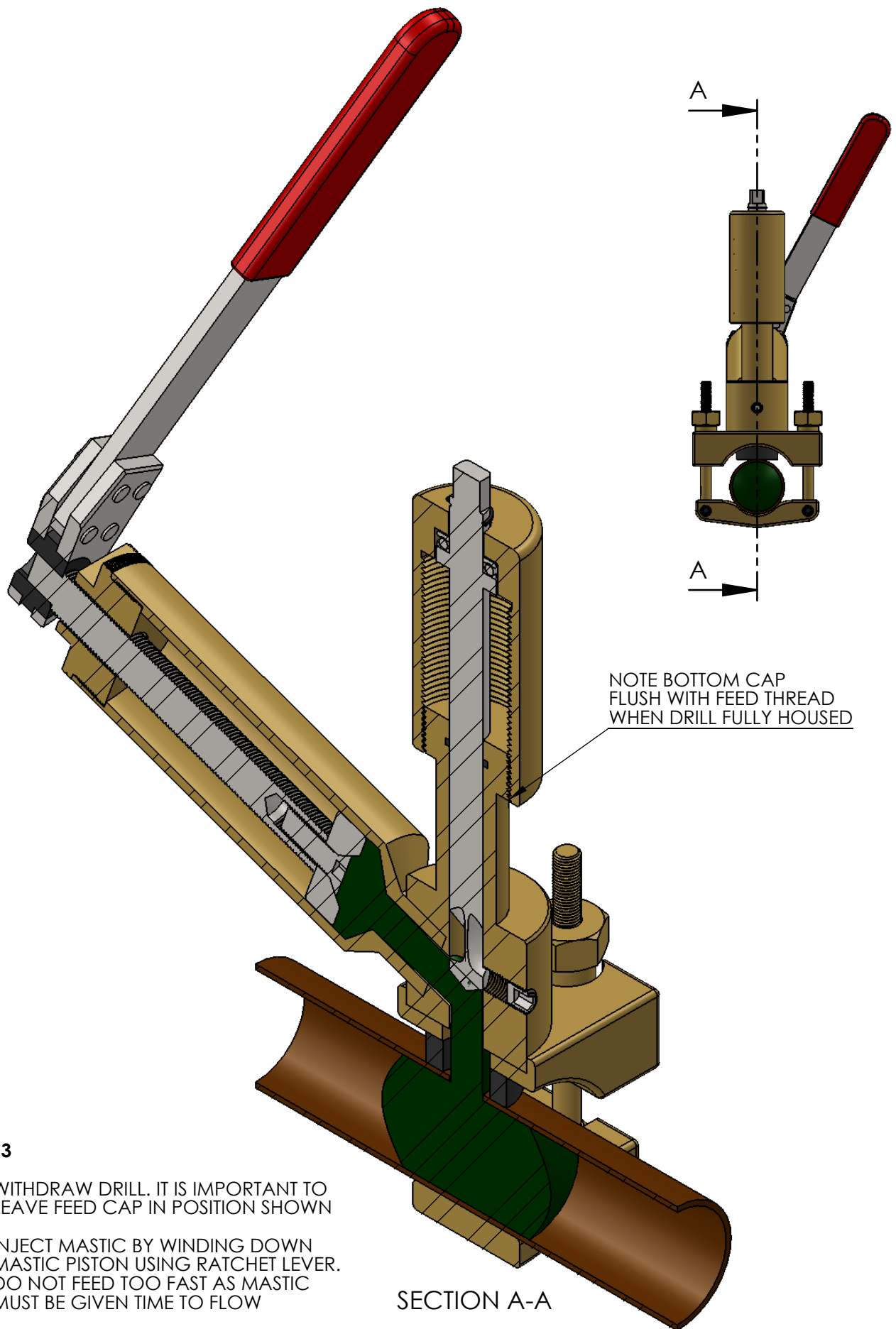
SECTION A-A



ALH SYSTEMS LIMITED
1 KINGDOM AVENUE
NORTHACRE INDUSTRIAL PARK
WESTBURY, WILTS. BA13 4WE

TEL: +44 (0)1373 858234

E-MAIL: sales@alh-systems.co.uk



STAGE 3

1. WITHDRAW DRILL. IT IS IMPORTANT TO LEAVE FEED CAP IN POSITION SHOWN
2. INJECT MASTIC BY WINDING DOWN MASTIC PISTON USING RATCHET LEVER. DO NOT FEED TOO FAST AS MASTIC MUST BE GIVEN TIME TO FLOW



ALH SYSTEMS LIMITED
1 KINGDOM AVENUE
NORTHACRE INDUSTRIAL PARK
WESTBURY, WILTS. BA13 4WE

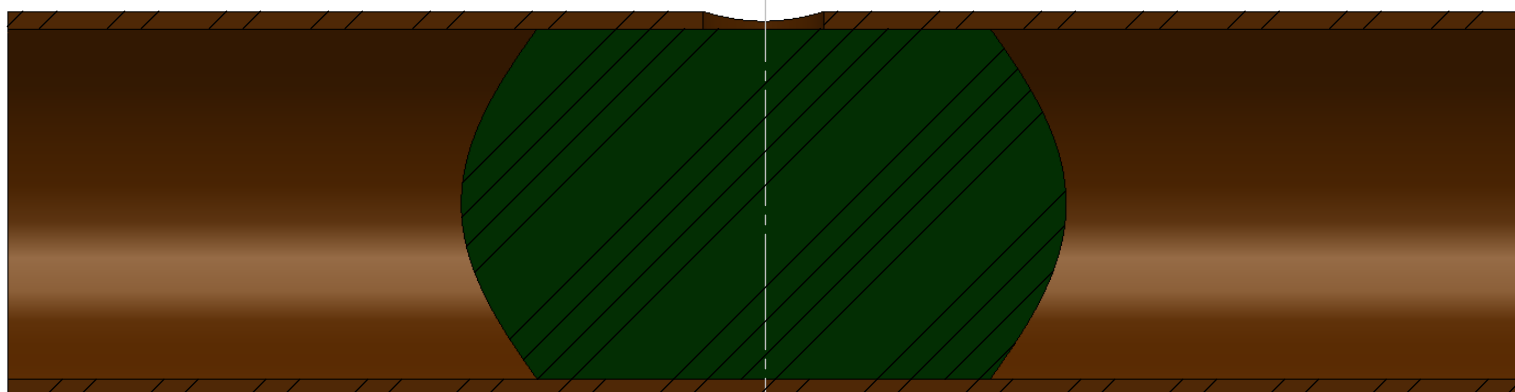
TEL: +44 (0)1373 858234

E-MAIL: sales@alh-systems.co.uk

CUT

STAGE 4

1. REMOVE TERMINATOR ASSEMBLY
2. CUT SERVICE. CUT THROUGH CENTRE OF INJECTION HOLE



ALH SYSTEMS LIMITED
1 KINGDOM AVENUE
NORTHACRE INDUSTRIAL PARK
WESTBURY, WILTS. BA13 4WE

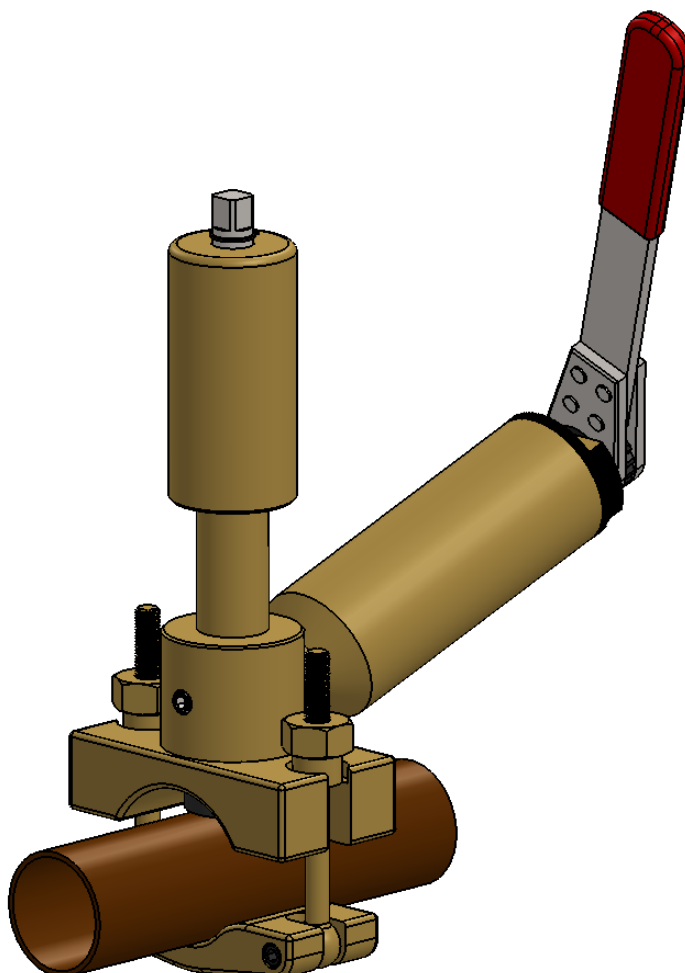
TEL: +44 (0)1373 858234

E-MAIL: sales@alh-systems.co.uk

APPENDIX A
MASTIC QUANTITIES

SERVICES @ 50" wg (1.85 psi)					
PIPE SIZE	GRAMS	OUNCES	LBS	KGS	STICK *
1½"	250	8.88	0.55	0.25	¼
2"	500	17.60	1.10	0.50	½

* MASTIC IS SUPPLIED IN STICKS APPROX 1½ SQUARE X 12" LG



ALH SYSTEMS LIMITED
1 KINGDOM AVENUE
NORTHACRE INDUSTRIAL PARK
WESTBURY, WILTS. BA13 4WE

TEL: +44 (0)1373 858234

E-MAIL: sales@alh-systems.co.uk