



ALH SYSTEMS LTD

SYSTEM III VALVE
SERVICE NOTES & PARTS LIST

ISSUE DATE 29/01/2014

SERVICE NOTES

The sketches on the following sheets show details of the simple valve assembly. When read together with the following service notes there should be adequate information to strip and rebuild a valve.

However, should service facilities not be available, valves can be returned to ALH Systems for refurbishment or training can be provided.

To split valve halves.

Undo 14 off bolts that hold top and bottom castings together and separate halves by carefully inserting screwdriver at joint and levering apart.

To reassemble valve halves.

Smear joint faces of both halves with silicone grease and place gasket (M2099) between. Tighten bolts (S0060) in sequence by gradually tightening opposite bolts to final recommended torque of 45 Nm.

Pressure test assembly to 45 psi and look for leaks at gasket joint, by-pass assembly and gate actuator boss. A pressure test kit can be supplied by ALH Systems.

To fit camseal.

The camseal (M2098) are of necessity a tight fit in the housing so to aid fitting silicone grease should be applied to the relevant seal faces. The nib on the outer face of the seal is now entered into the slot in the housing groove. When the nib is located all around, the rest of the seal is pushed into the housing using a blunt bar. A tool can be supplied by ALH Systems as an aid to fitting.

Note - In order to prevent stretch of the seal it must be gradually pushed into its housing by applying pressure in sequence at diametrically opposite positions.

To fit top face seal.

The top face 'O' seal (M1032) is housed in a dovetail groove so considerable force is required to push seal past the narrow neck of the groove. Silicone grease applied to the seal will reduce insertion forces. As with the camseal, pushing at diametrically opposite positions will eliminate seal stretch.

Storing

Before storing the valve for long periods it is advisable to coat the gate with silicone grease, operate the gate a few times and then store the valve with the gate open.

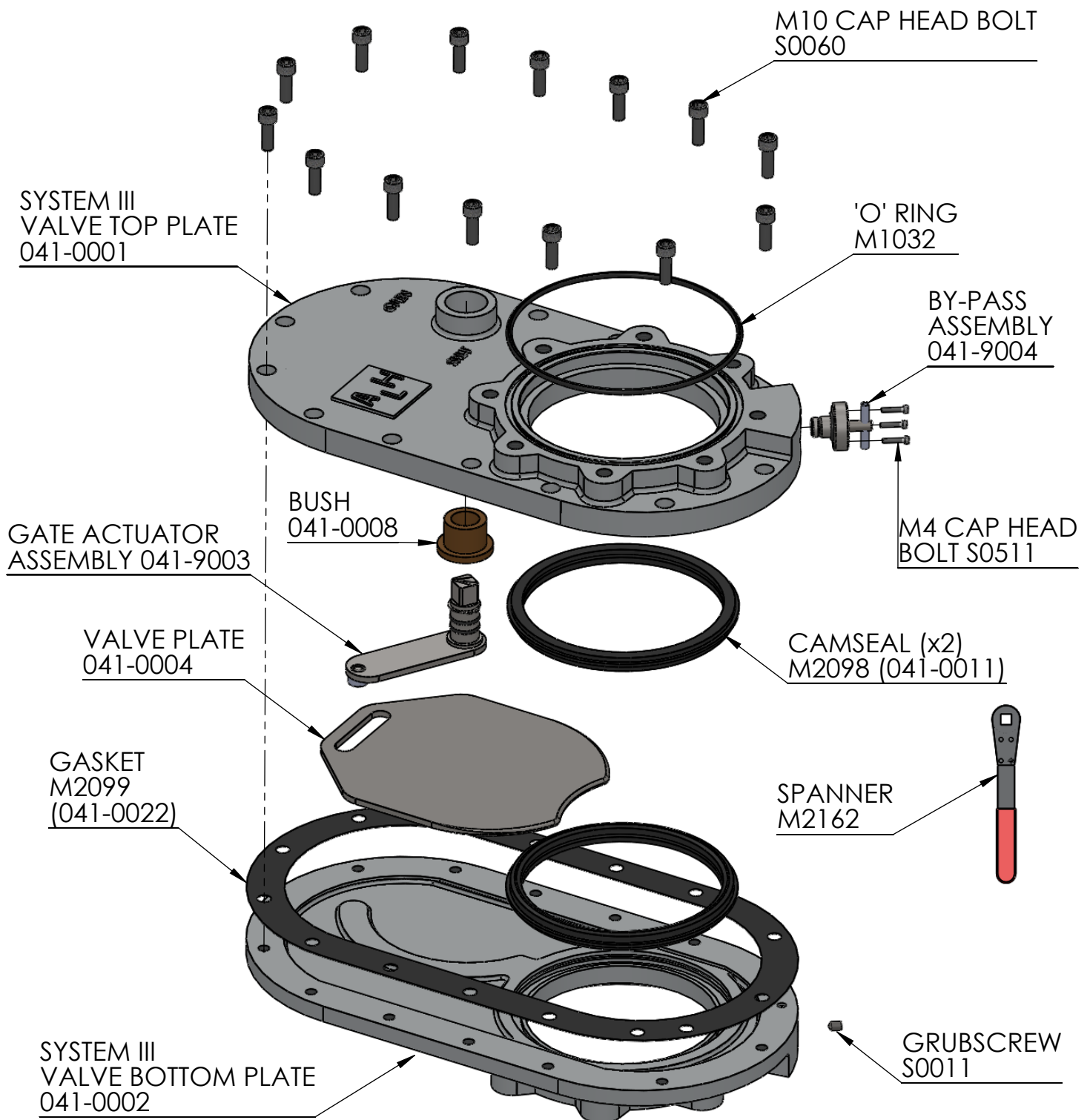


ALH SYSTEMS LIMITED
1 KINGDOM AVENUE
NORTHACRE INDUSTRIAL PARK
WESTBURY, WILTS. BA13 4WE

TEL: +44 (0)1373 858234

E-MAIL: sales@alh-systems.co.uk

SYSTEM III VALVE ASSEMBLY

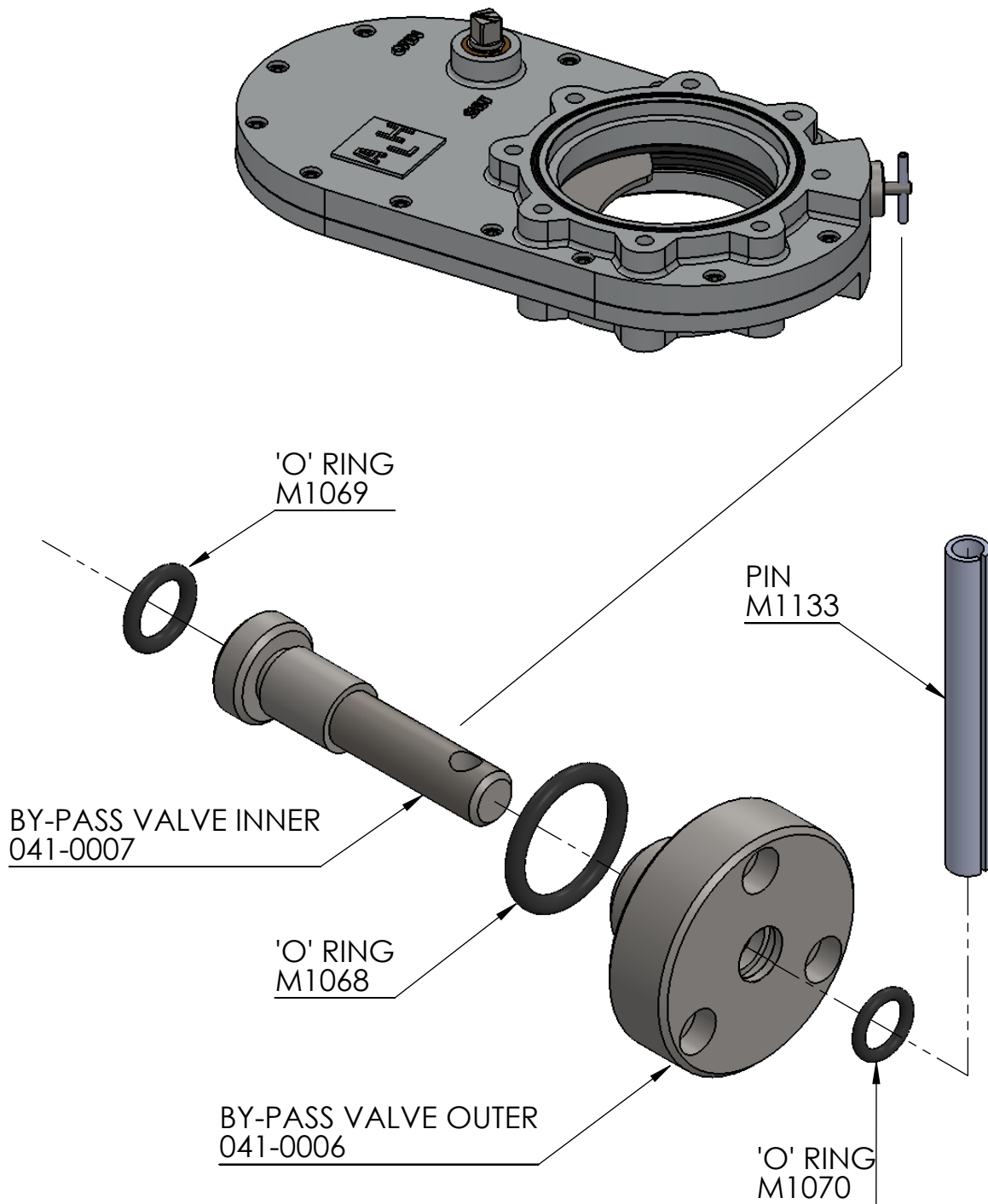


ALH SYSTEMS LIMITED
1 KINGDOM AVENUE
NORTHACRE INDUSTRIAL PARK
WESTBURY, WILTS. BA13 4WE

TEL: +44 (0)1373 858234

E-MAIL: sales@alh-systems.co.uk

BY-PASS ASSEMBLY

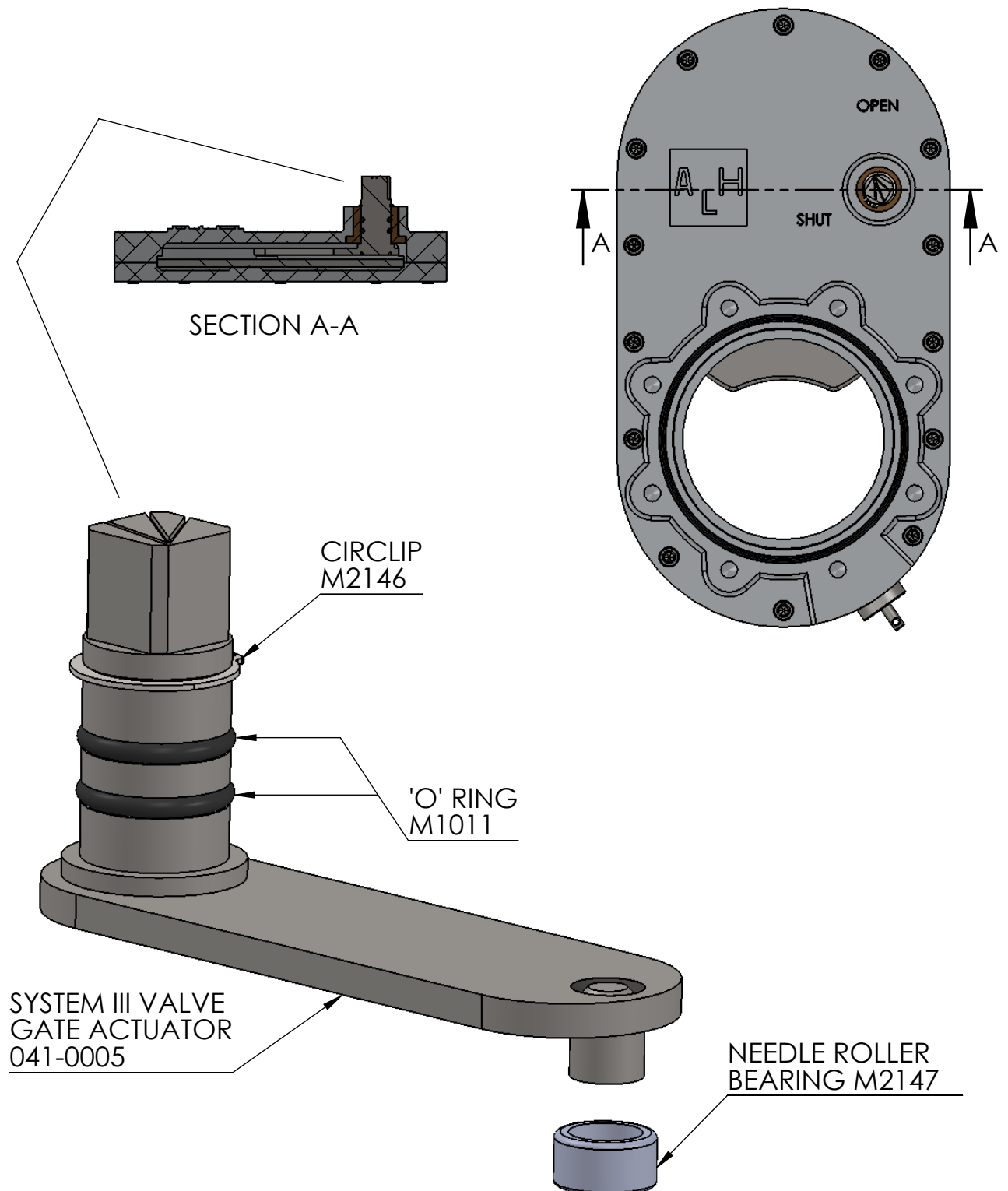


ALH SYSTEMS LIMITED
1 KINGDOM AVENUE
NORTHACRE INDUSTRIAL PARK
WESTBURY, WILTS. BA13 4WE

TEL: +44 (0)1373 858234

E-MAIL: sales@alh-systems.co.uk

GATE ACTUATOR ASSEMBLY

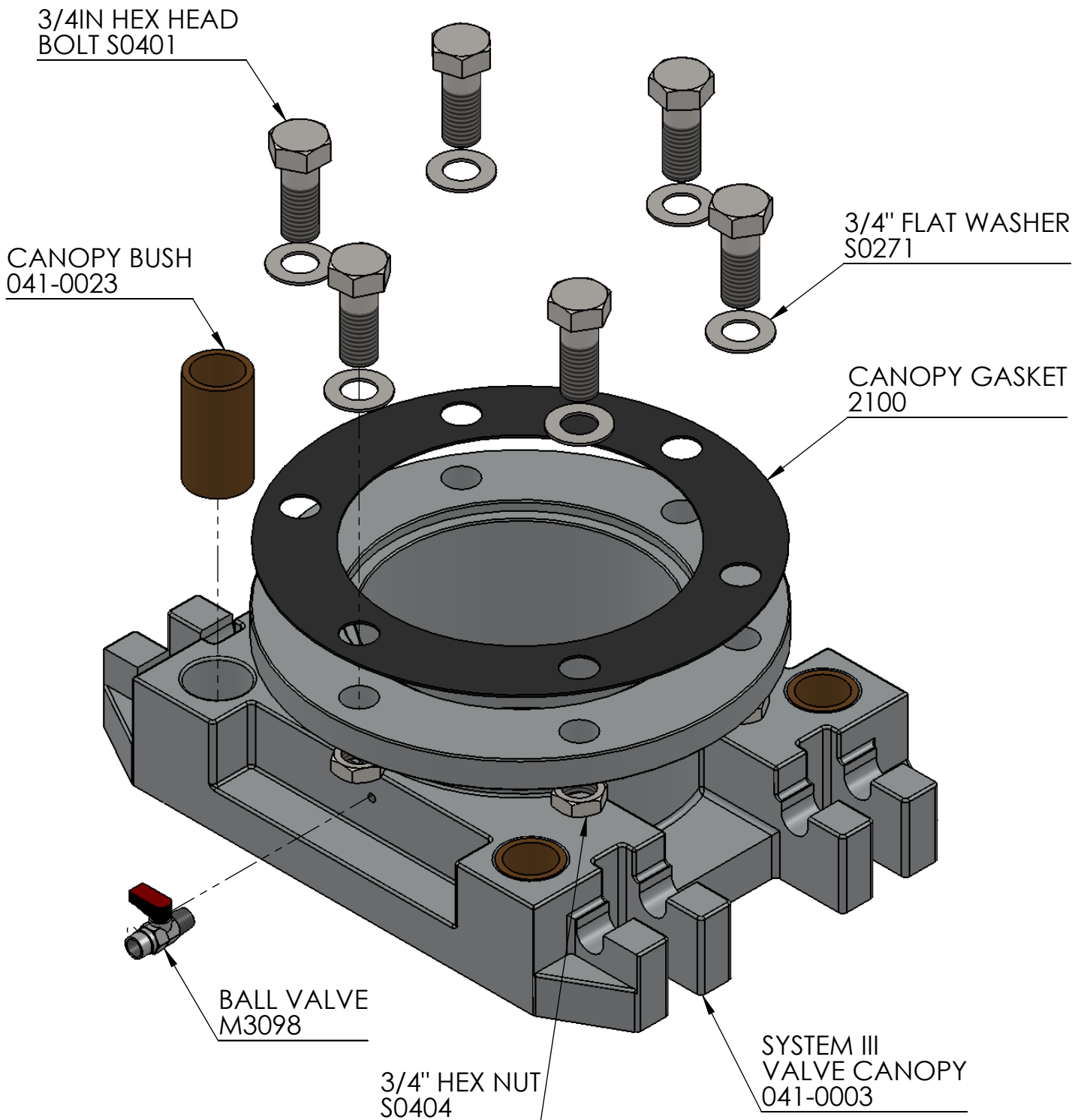


ALH SYSTEMS LIMITED
1 KINGDOM AVENUE
NORTHACRE INDUSTRIAL PARK
WESTBURY, WILTS. BA13 4WE

TEL: +44 (0)1373 858234

E-MAIL: sales@alh-systems.co.uk

SYSTEM III CANOPY ASSEMBLY

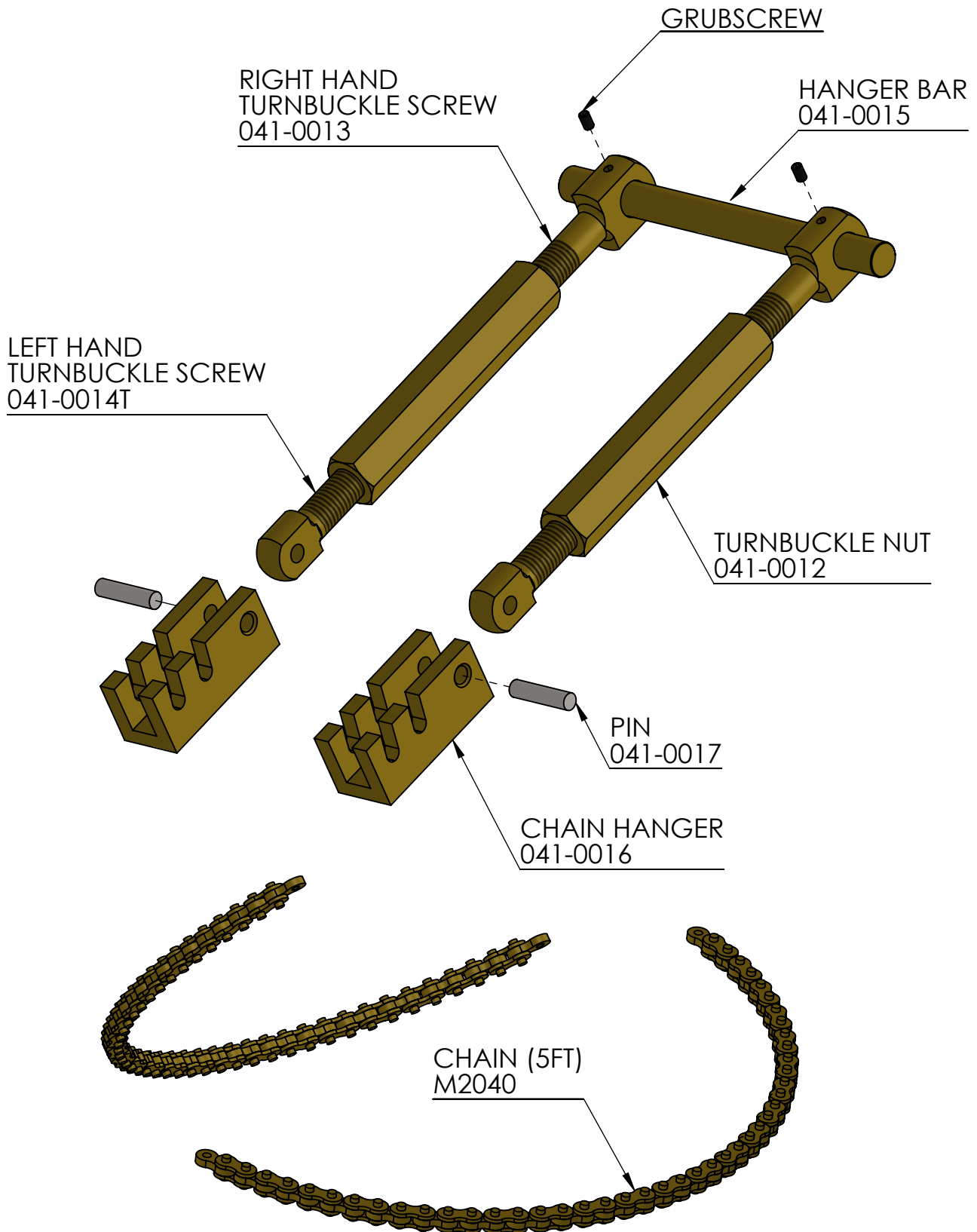


ALH SYSTEMS LIMITED
1 KINGDOM AVENUE
NORTHACRE INDUSTRIAL PARK
WESTBURY, WILTS. BA13 4WE

TEL: +44 (0)1373 858234

E-MAIL: sales@alh-systems.co.uk

ADDITIONAL COMPONENTS



ALH SYSTEMS LIMITED
1 KINGDOM AVENUE
NORTHACRE INDUSTRIAL PARK
WESTBURY, WILTS. BA13 4WE

TEL: +44 (0)1373 858234

E-MAIL: sales@alh-systems.co.uk