



ALH SYSTEMS LTD

**1 LITRE PRESSURE POT
MAINSPRAY INJECTION**

**OPERATOR INSTRUCTIONS
& PARTS LIST**

ISSUE DATE - 02/03/2015

CONTENTS PAGE

STEP 1 - PREPARE MAINSPRAY	PAGE 1
STEP 2 - UNSECURING & REMOVING PRESSURE POT LID	PAGE 2
STEP 3 - REPLACING MAINSPRAY AND LID	PAGE 3
STEP 4 - CONNECTING PRESSURE POT TO PIPE	PAGE 4
STEP 5 - INJECTING MAINSPRAY	PAGE 5
STEP 6 - JOB COMPLETION	PAGE 6
MAIN ASSEMBLY PARTS LIST	PAGE 7
LID ASSEMBLY PARTS LIST	PAGE 8
AIRLINE ASSEMBLY PARTS LIST	PAGE 9
1Ltr. PRESSURE POT ASSEMBLY PARTS LIST	PAGE 10

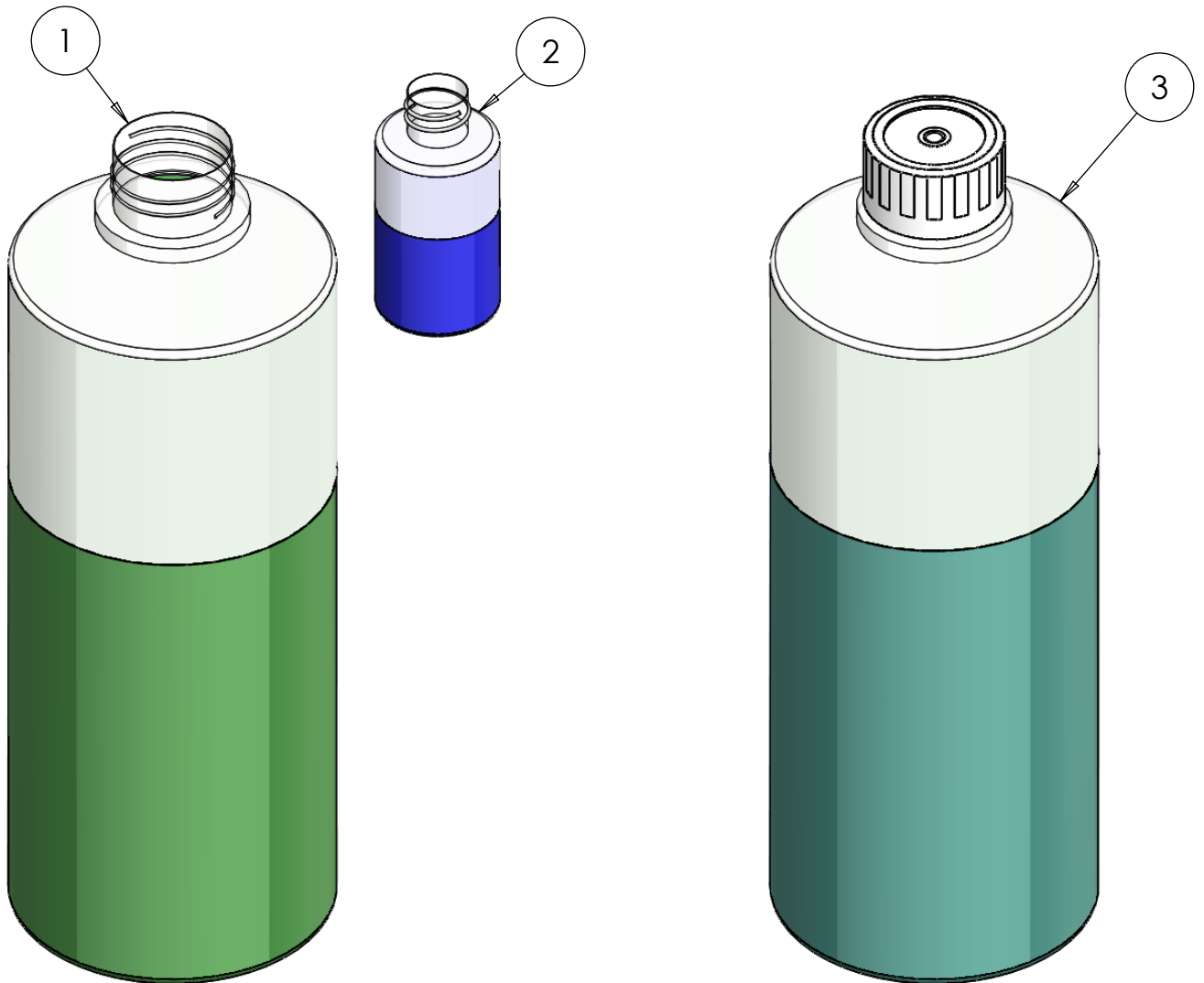


ALH SYSTEMS LIMITED
1 KINGDOM AVENUE
NORTHACRE INDUSTRIAL PARK
WESTBURY, WILTS. BA13 4WE

TEL: +44 (0)1373 858234
EMAIL: sales@alh-systems.co.uk

STEP 1

(THIS INSTRUCTION ASSUMES INJECTION NIPPLE IS FITTED TO JOINT)



1. PREPARE MAINSPRAY. 1 LITRE OF MAINSPRAY IS SUPPLIED IN A 1.5 LITRE BOTTLE (1) WITH TAMPER EVIDENT SCREW CAP AND WITH SEPARATE ACTIVATOR CONTAINER (2).

2. REMOVE BOTTLE CAP, POUR ACTIVATOR INTO BOTTLE, REPLACE CAP AND SHAKE VIGOROUSLY FOR NO LESS THAN 15 SECONDS (3).



ALH SYSTEMS LIMITED
1 KINGDOM AVENUE
NORTHACRE INDUSTRIAL PARK
WESTBURY, WILTS. BA13 4WE

TEL: +44 (0)1373 858234
EMAIL: sales@alh-systems.co.uk

STEP 2

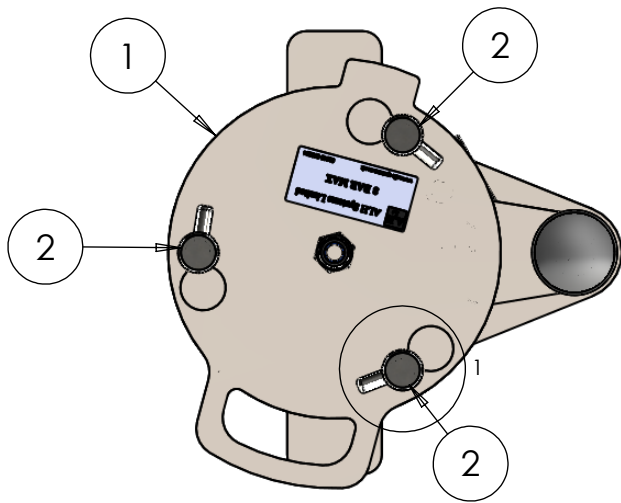
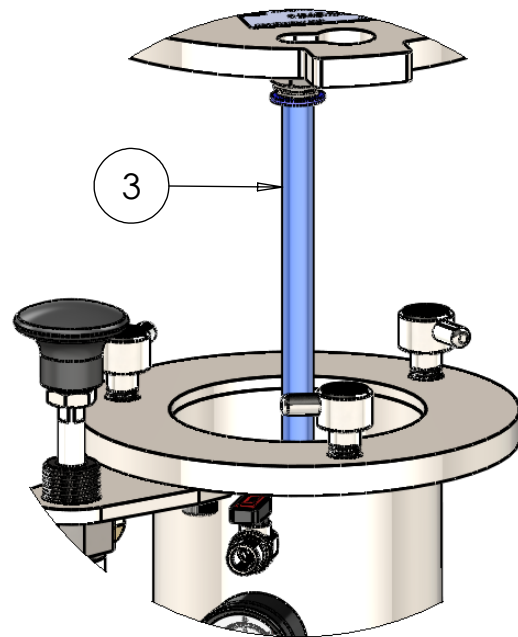
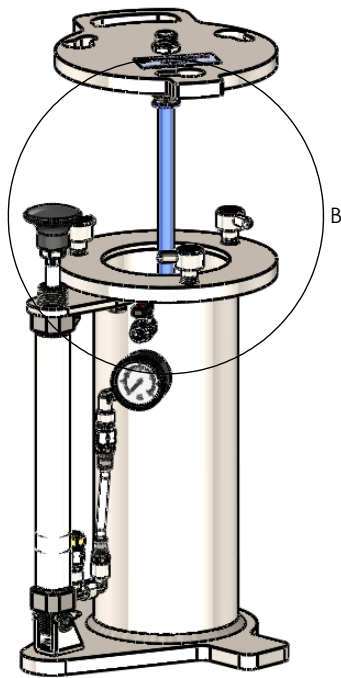
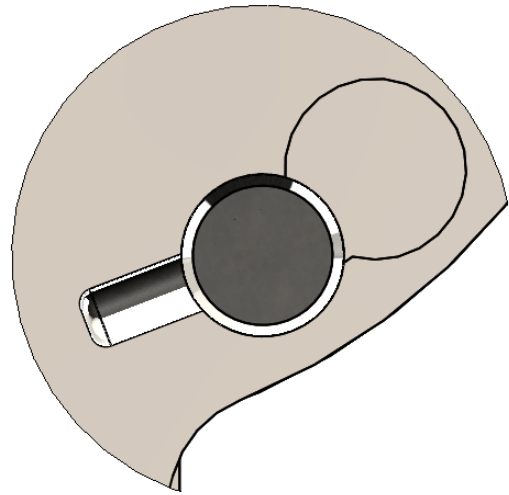


Fig. 1



3. TO REMOVE PRESSURE POT LID (1), FIRSTLY SLACKEN LID BOLTS (2) AND ROTATE SUCH THAT PINS ON BOLT HEADS LINE UP WITH 'KEYHOLES' IN LID AS SHOWN Fig 1.

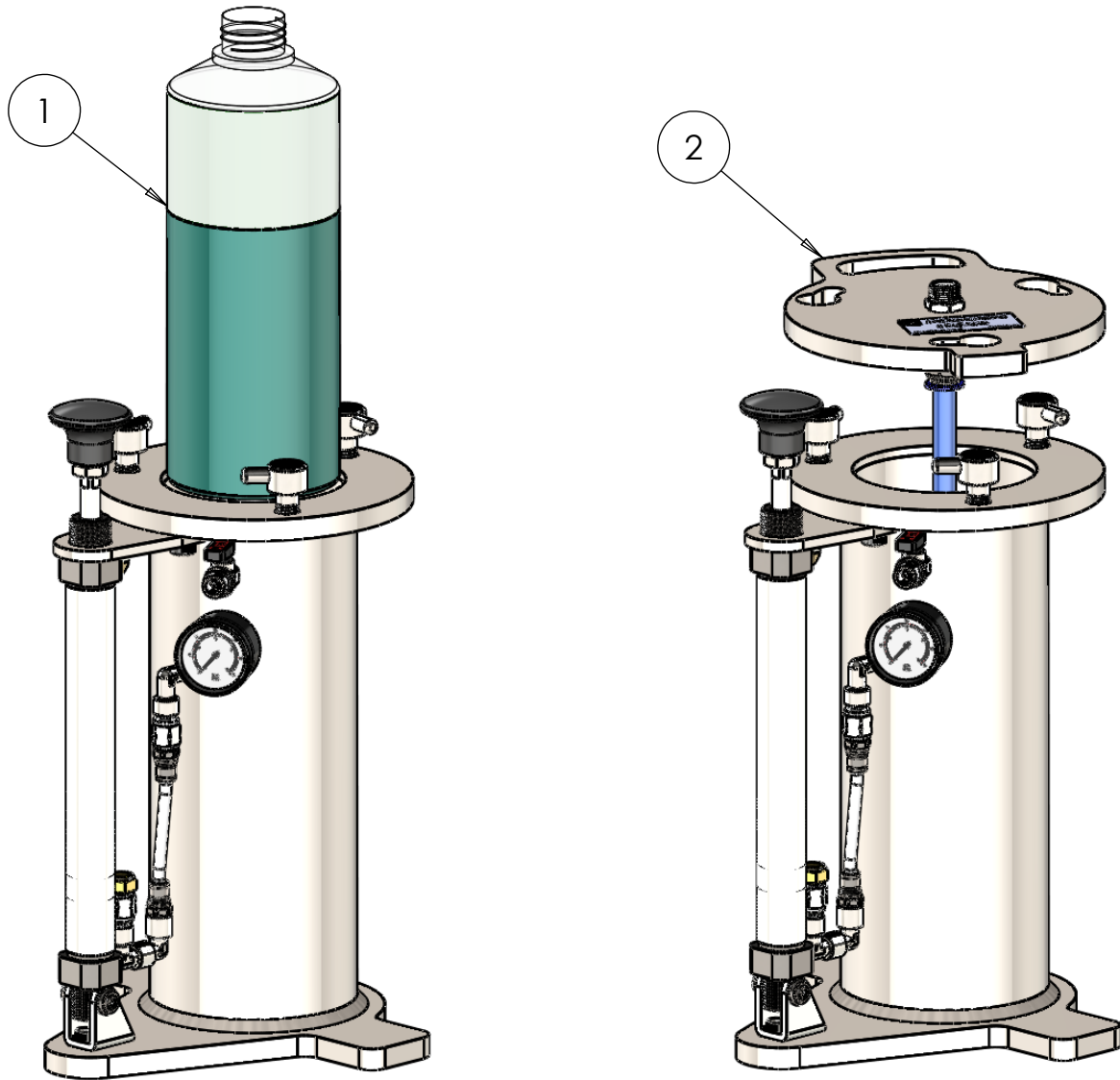
4. THE LID IS NOW ROTATED UNTIL THE 'KEYHOLES' IN LID LINE UP WITH BOLT HEAD PROFILE. THE LID CAN NOW BE LIFTED CLEAR OF THE BOLT HEADS. NOTE THAT A DIP TUBE (3) (APPROX 280 LG) IS CONNECTED TO THE UNDERSIDE OF THE LID.



ALH SYSTEMS LIMITED
1 KINGDOM AVENUE
NORTHACRE INDUSTRIAL PARK
WESTBURY, WILTS. BA13 4WE

TEL: +44 (0)1373 858234
EMAIL: sales@alh-systems.co.uk

STEP 3



5. THE BOTTLE CONTAINING MAINSPRAY (1), WITH CAP REMOVED, IS NOW CAREFULLY PLACED INTO THE PRESSURE POT.

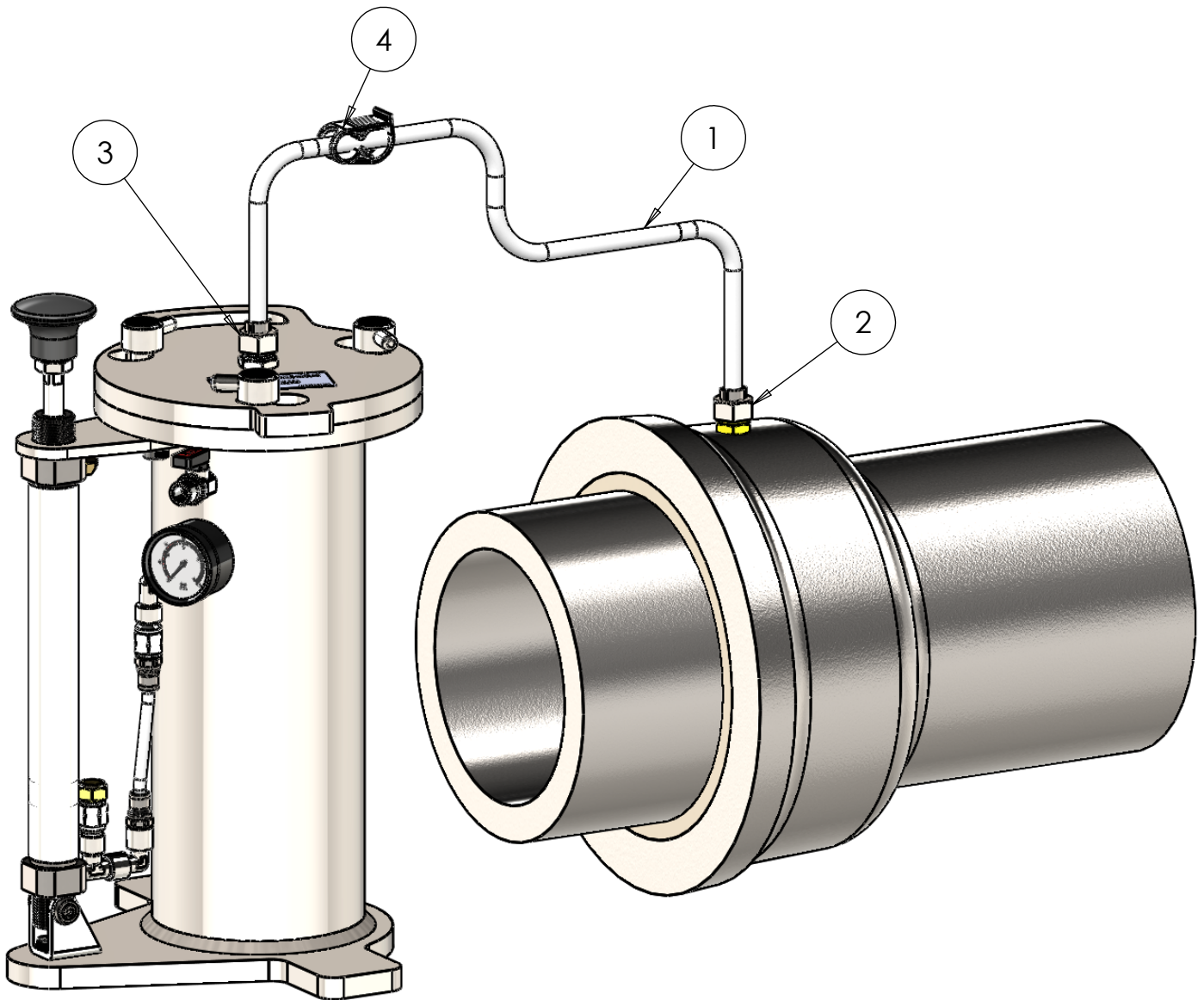
6. THE PRESSURE POT LID (2) IS NOW REPLACED, ROTATED TO ENGAGE THE BOLTS INTO THE NARROW PART OF THE LID 'KEYHOLES' AND TIGHTENED FINGER TIGHT.



ALH SYSTEMS LIMITED
1 KINGDOM AVENUE
NORTHACRE INDUSTRIAL PARK
WESTBURY, WILTS. BA13 4WE

TEL: +44 (0)1373 858234
EMAIL: sales@alh-systems.co.uk

STEP 4



7. ONE END OF THE SEALANT DELIVERY TUBE, WITH PINCH CLIP FITTED (1) AND CLAMPED, IS NOW CONNECTED TO THE NIPPLE ON THE JOINT TO BE TREATED (2) AND THE OTHER END TO THE NIPPLE IN THE CENTRE OF THE POT LID (3). NOTE THAT THE PINCH CLIP (4) SHOULD BE POSITIONED AT THE POT END OF THE ASSEMBLY (APPROX 300mm FROM END FITTING).

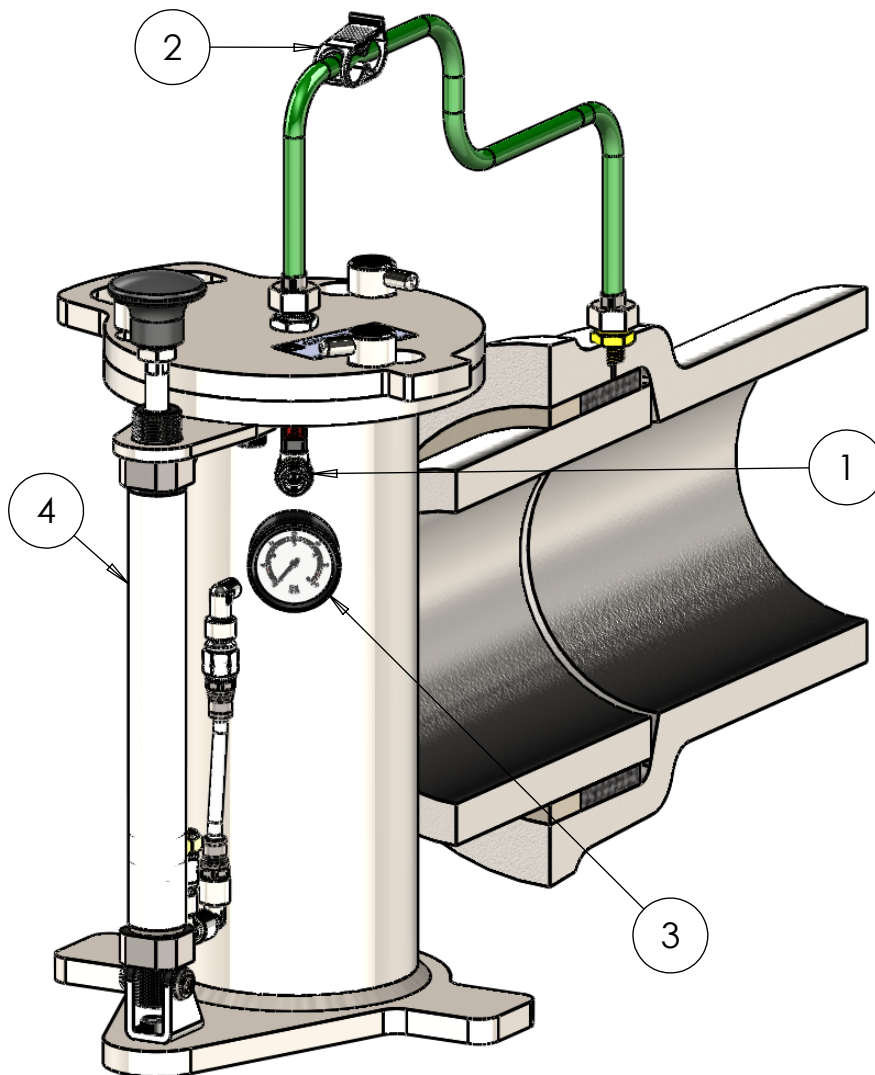
NOTE - THE DELIVERY LINE IS NOT VALVED. THIS IS INTENTIONAL.



ALH SYSTEMS LIMITED
1 KINGDOM AVENUE
NORTHACRE INDUSTRIAL PARK
WESTBURY, WILTS. BA13 4WE

TEL: +44 (0)1373 858234
EMAIL: sales@alh-systems.co.uk

STEP 5



8. MAKING SURE THE VENT VALVE (1) IS CLOSED, THE PINCH CLIP (2) CAN NOW BE SLOWLY RELEASED TO ALLOW LEAKAGE FROM JOINT TO PRIME THE PRESSURE POT TO MAINS PRESSURE. AT THIS TIME MAKE A NOTE OF THE PRESSURE ON THE GAUGE (3).

9. THE PUMP (4) IS NOW USED TO INCREASE PRESSURE IN POT TO 5 psi ABOVE MAINS PRESSURE TO SLOWLY INJECT MAINSPRAY INTO THE JOINT. ONE STROKE OF THE PUMP WILL RAISE PRESSURE IN THE POT APPROXIMATELY 0.5 psi.

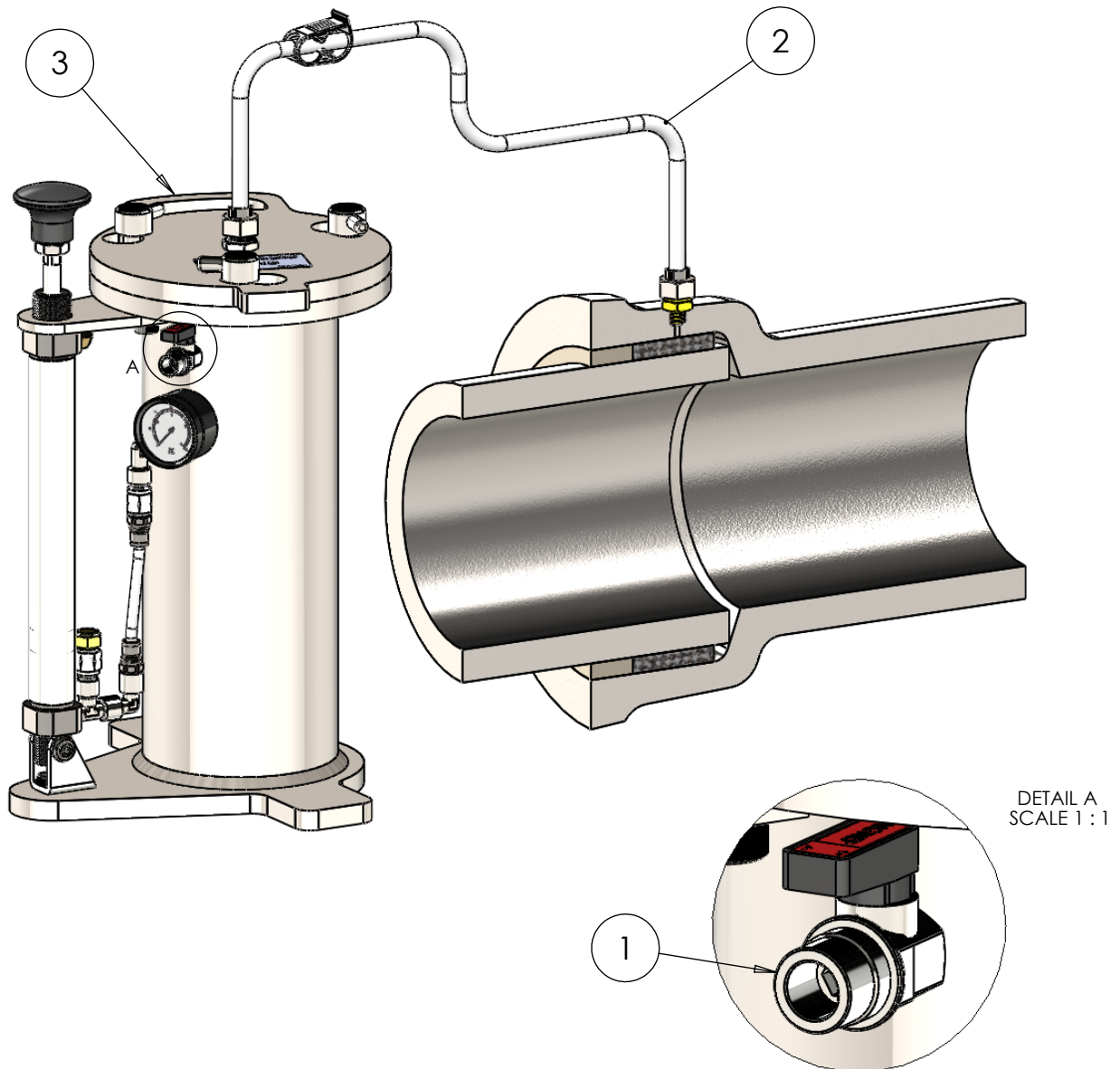
10. THE INJECTION PROCESS SHOULD TAKE 10 - 15 MINUTES. (PRESSURE MAY NEED TO BE INCREASED ON SOME JOINT TYPES.) **DO NOT EXCEED 3 BAR.**



ALH SYSTEMS LIMITED
1 KINGDOM AVENUE
NORTHACRE INDUSTRIAL PARK
WESTBURY, WILTS. BA13 4WE

TEL: +44 (0)1373 858234
EMAIL: sales@alh-systems.co.uk

STEP 6



11. ONCE THE CONTENTS OF THE 1.5 LITRE BOTTLE IS EXHAUSTED AIR WILL APPEAR IN THE SEALANT DELIVERY TUBE (2). CONTINUE INJECTING UNTIL TUBE IS ALMOST CLEAR (DO NOT INJECT AIR INTO MAIN). AT THIS TIME STOP PUMPING AND CLIP OFF THE SEALANT DELIVERY TUBE.

12. NOW VENT OFF PRESSURE IN THE POT BY OPENING VENT VALVE (1) ON SIDE OF POT.

13. THE SEALANT DELIVERY TUBE (2) CAN NOW BE DISCONNECTED FROM THE POT AND THE LID (3) REMOVED AS OF NOTES 3 & 4 (STEP 2).

14. WIPE EQUIPMENT CLEAN

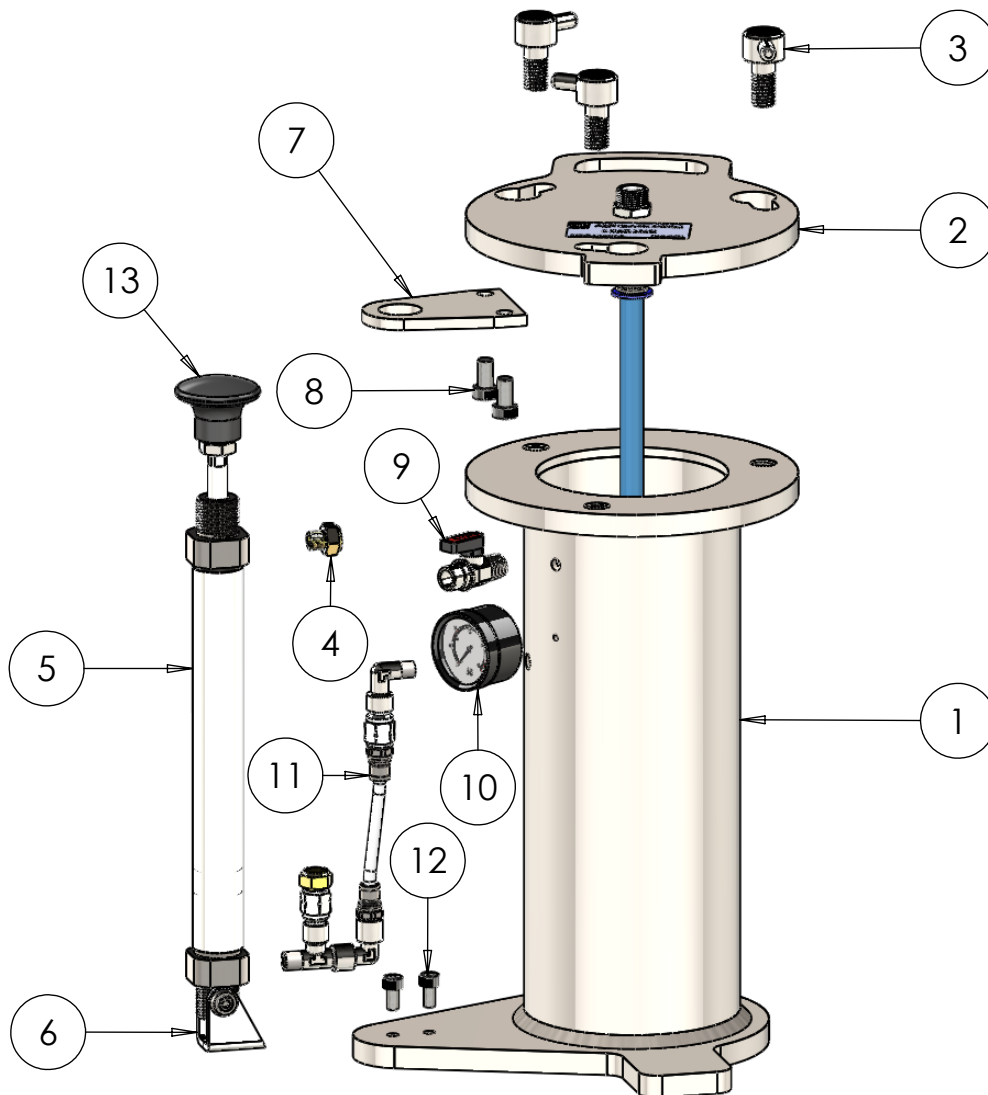


ALH SYSTEMS LIMITED
1 KINGDOM AVENUE
NORTHACRE INDUSTRIAL PARK
WESTBURY, WILTS. BA13 4WE

TEL: +44 (0)1373 858234
EMAIL: sales@alh-systems.co.uk

MAIN ASSEMBLY PARTS LIST

ITEM NO.	PART NUMBER	DESCRIPTION	QTY.
1	172-0001	BODY	1
2	172-9001	LID ASSEMBLY	1
3	172-0005	LID BOLT	3
4	M4665	EXHAUST PORT FILTER	1
5	M4655	PUMP	1
6	M4657	CYLINDER MOUNTING	1
7	172-0003	TOP BRACKET	1
8	S0085	CAP HEAD BOLT	2
9	M3098	1-4 INCH BSP BALL VALVE	1
10	M4651	PRESSURE GAUGE	1
11	172-9002	AIRLINE ASSEMBLY	1
12	S0086	CAP HEAD BOLT	2
13	M4656	KNOB	1

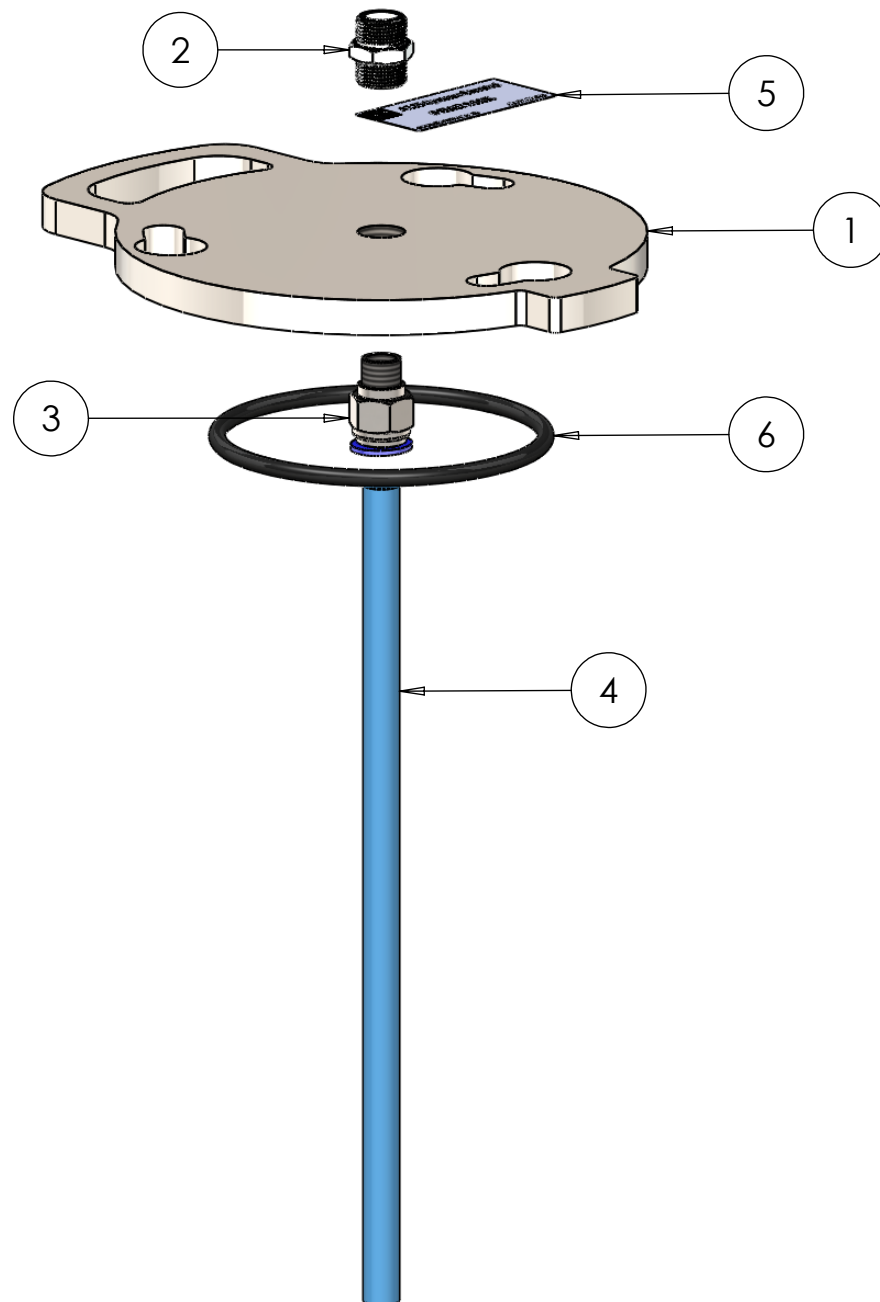


ALH SYSTEMS LIMITED
 1 KINGDOM AVENUE
 NORTHACRE INDUSTRIAL PARK
 WESTBURY, WILTS. BA13 4WE

TEL: +44 (0)1373 858234
 EMAIL: sales@alh-systems.co.uk

LID ASSEMBLY PARTS LIST

ITEM NO.	PART NUMBER	DESCRIPTION	QTY.
1	172-0002	LID	1
2	M4243	MALE ADAPTOR	1
3	M4664	MALE STUD	1
4	172-0010	DIP TUBE	1
5	172-0009	1Ltr PRESSURE POT STICKER	1
6	M1084	'O' RING	1

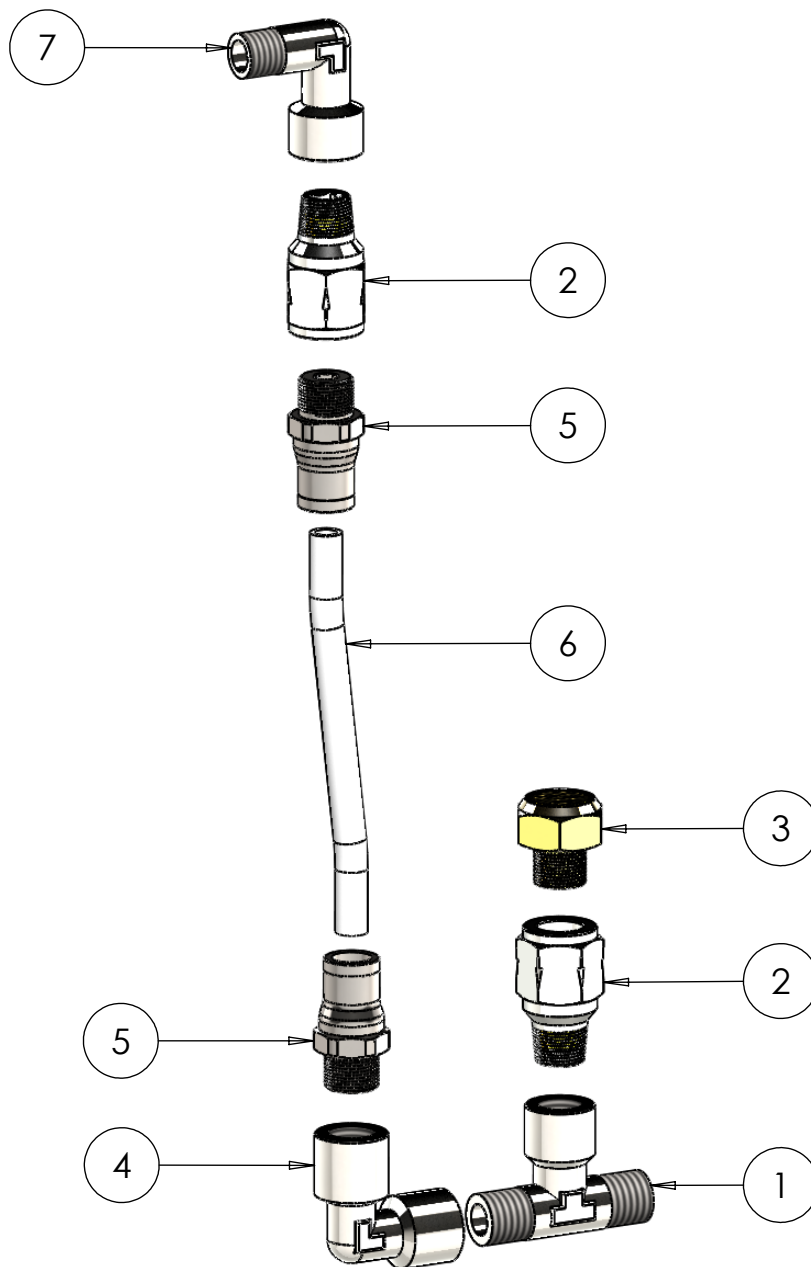


ALH SYSTEMS LIMITED
 1 KINGDOM AVENUE
 NORTHACRE INDUSTRIAL PARK
 WESTBURY, WILTS. BA13 4WE

TEL: +44 (0)1373 858234
 EMAIL: sales@alh-systems.co.uk

AIRLINE ASSEMBLY PARTS LIST

ITEM NO.	PART NUMBER	DESCRIPTION	QTY.
1	M4660	ADAPTOR	1
2	M4659	NON RETURN VALVE	2
3	M4665	EXHAUST PORT FILTER	1
4	M4653	EQUAL ELBOW	1
5	M4654	PUSH-IN FITTING	2
6	M9024	NYLON TUBE 6 O/D x 160 LG	1
7	M4652	EQUAL ELBOW	1

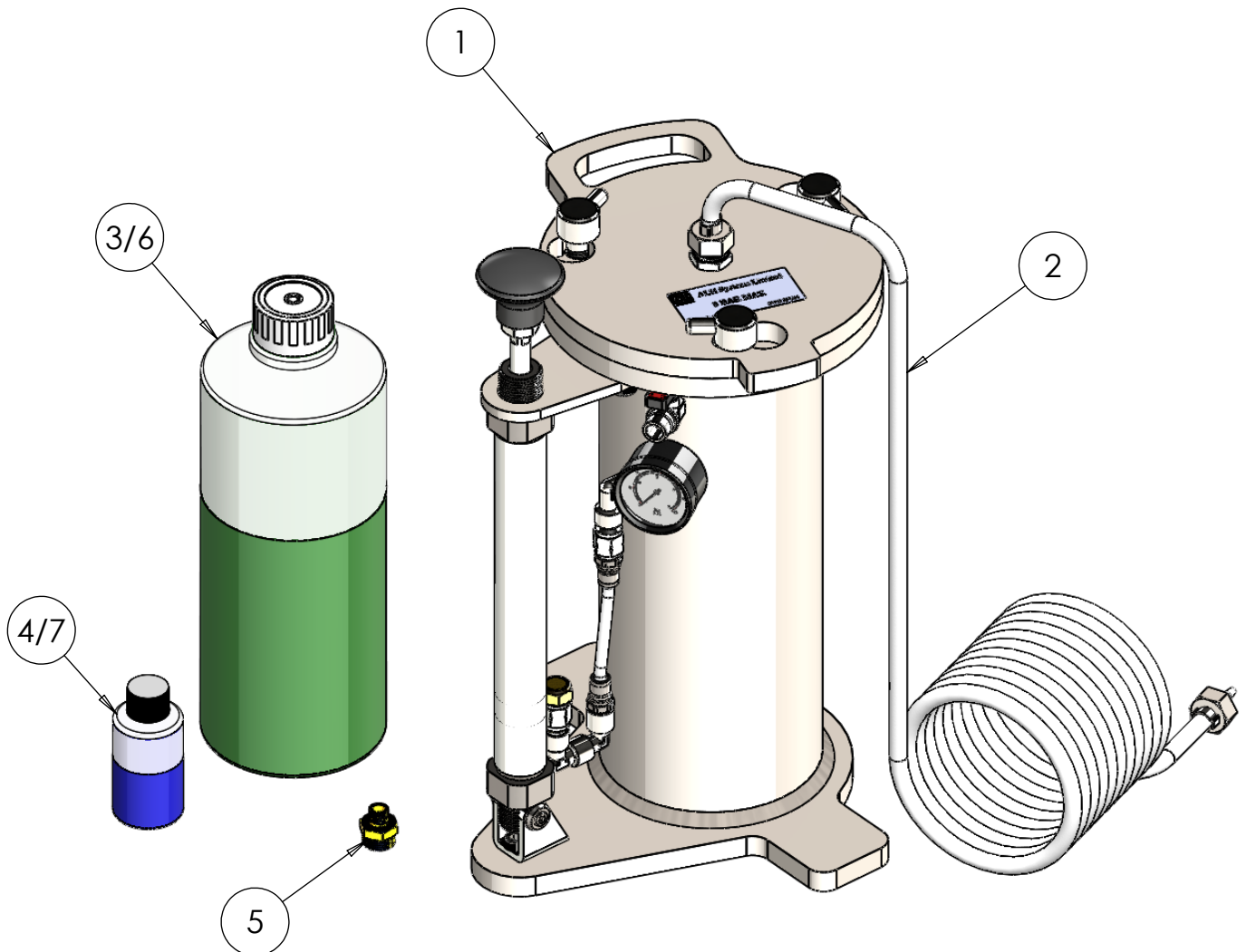


ALH SYSTEMS LIMITED
 1 KINGDOM AVENUE
 NORTHACRE INDUSTRIAL PARK
 WESTBURY, WILTS. BA13 4WE

TEL: +44 (0)1373 858234
 EMAIL: sales@alh-systems.co.uk

1Ltr PRESSURE POT ASSEMBLY & CONSUMABLES PARTS LIST

ITEM NO.	PART NUMBER	DESCRIPTION	QTY.
1	172-9000	1 LITRE PRESSURE POT ASSEMBLY	1
2	A5601	MAINSEAL INJECTION ASSEMBLY	1
3	A2998	1Ltr MAINSPRAY	1
4	A2998	ACTIVATOR FOR 1 Ltr MAINSPRAY	1
5	A6110	1/8" BRASS NIPPLE (PACK OF 20)	1
6	A2999	1/2 Ltr MAINSPRAY	1
7	A2999	ACTIVATOR FOR 1/2 Ltr MAINSPRAY	1



ALH SYSTEMS LIMITED
 1 KINGDOM AVENUE
 NORTHACRE INDUSTRIAL PARK
 WESTBURY, WILTS. BA13 4WE

TEL: +44 (0)1373 858234
 EMAIL: sales@alh-systems.co.uk