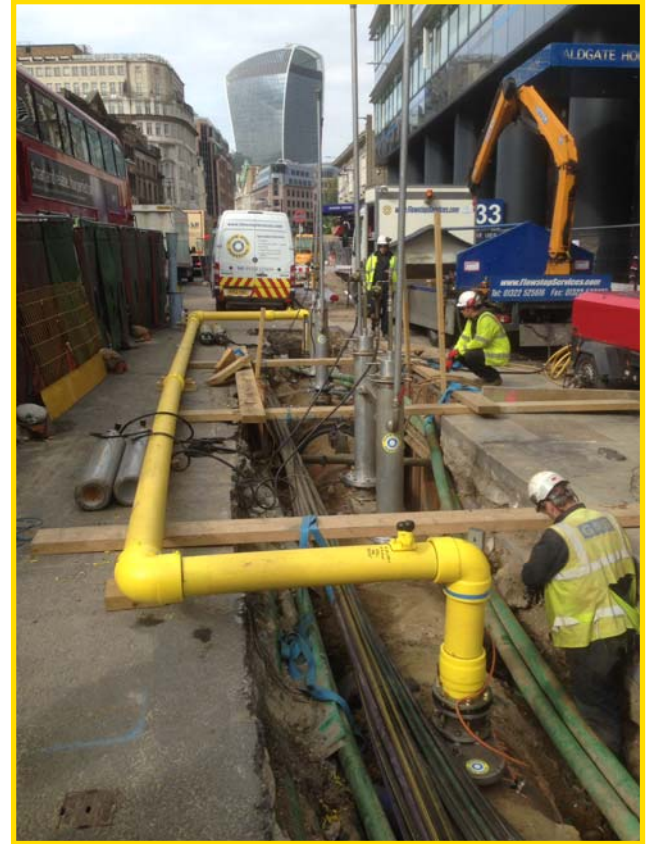


ALH Systems has developed an innovative and cost effective method to gain access into live, large diameter gas mains, Bond and Bolt.

Conventional access systems require large excavations including underneath the pipe to install chains. The Bond & Bolt saddle only requires the crown of the main to be exposed, thus massively reducing excavation costs and time.

How it Works

The system works by applying an adhesive to the shot blasted main, before seating the saddle in place. Four holes are then drilled & tapped under gas free conditions before bolts are installed and encapsulated with Series 6 resin. In 2015 the Bond & Bolt saddle was successfully used in conjunction with the ALH large diameter bagtubes, on its first live flowstopping job in central London.



Bond & Bolt system working with the ALH large diameter flowstopping equipment. Aldgate High Street, London



*24" Bond & Bolt saddle
This is an exhibition piece and can be viewed at ALH Systems*

Key Features:

- No need for deep excavation working. Bond & Bolt saddle only requires the crown of the main to be exposed.
- Vast excavation and backfill cost savings, with the potential for a decrease in lane rental charges/road closures
- No impact on host main support.
- Potential reduction in 3rd party damage
- Saddles for 18" - 48" diameter mains.
- Designed to work with the System 3 valve and flowstopping equipment.
- Centre hole can be plugged using an ALH Non Tap Plug.

Bond & Bolt saddles are available for the following size pipes:

Part No.	Saddle Size
119-9020	18"
119-9006	24"
119-9013	26"
119-9009	27"
119-9010	30"
119-9007	36"
119-9011	40"
119-9012	42"
119-9008	48"



Complete Bond & Bolt saddle kit

Bolt Drilling Machine

The Bond & Bolt drilling machine features an integral feed cap and bronze bush, for a smooth and controlled drilling operation. The system is centralized around a 1.5" ball valve for gas free working, with interchangeable bodies for each step of the procedure.

ALH Systems Ltd offer full training to clients with existing equipment and when new equipment is purchased.



Bond & Bolt complete drilling kit
Part Number: 119-9018



Bond & Bolt Saddles, Wandon Road, Fulham, 2016



ALH Systems Ltd
1 Kingdom Avenue
Northacre Industrial Park
Westbury
Wiltshire
BA13 4WE

Tel: 01373 858234
Email: sales@alh-systems.co.uk
Website: www.alh-systems.co.uk



This company is in accordance with:
ISO 9001 & ISO 14001

The designs and specifications shown are subject to change without notice due to the continuing programme of product development by ALH Systems Limited.